

# How to Connect Canon Print Studio Pro to Photoshop CC 2015.5

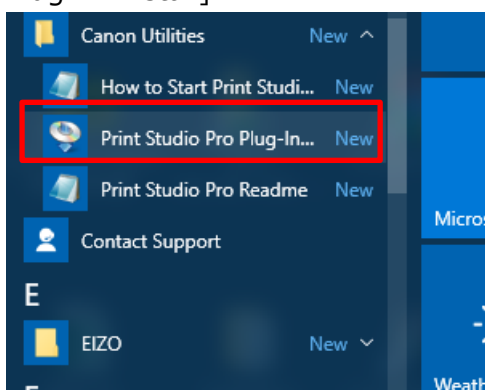
When you use Photoshop CC 2015.5, you have to configure Canon Print Studio Pro manually to connect Photoshop according to the following procedure.

## <Procedure>

1. Download the exe file from Canon's site.
2. Double-click the downloaded exe file to decompress it. Installation will start automatically.
3. Exit Photoshop.

### 4. [Win]

Start [Print Studio Pro Plug-In Install] from [Start] menu - [Canon Utilities] - [Print Studio Pro Plug-In Install].



### [Mac]

Start [Plug-In Install] from [Go] menu of Finder - [Applications] - [Canon Utilities] - [Print Studio Pro].

5. Click "Browse" and select following folder.

### [Win 32-bit]

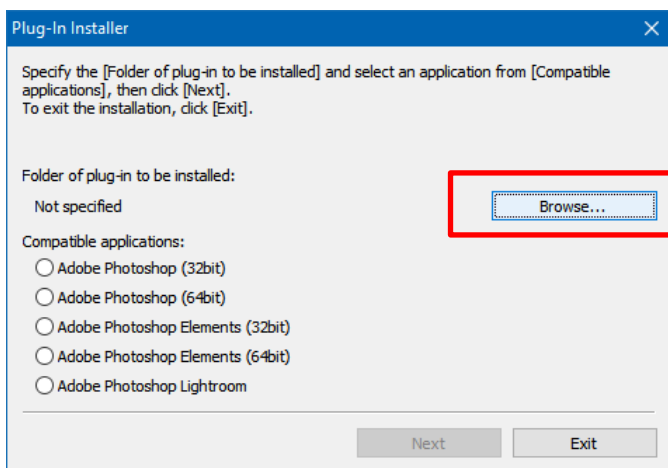
C:\Program Files\Adobe\Adobe Photoshop CC 2015.5(32bit)\Plug-ins

### [Win 64-bit]

C:\Program Files\Adobe\Adobe Photoshop CC 2015.5\Plug-ins

### [Mac]

/Applications/Adobe Photoshop CC 2015.5/Plug-ins



6. Select Adobe Photoshop (32bit or 64bit) you use from “Compatible Applications”, and click [Next].

