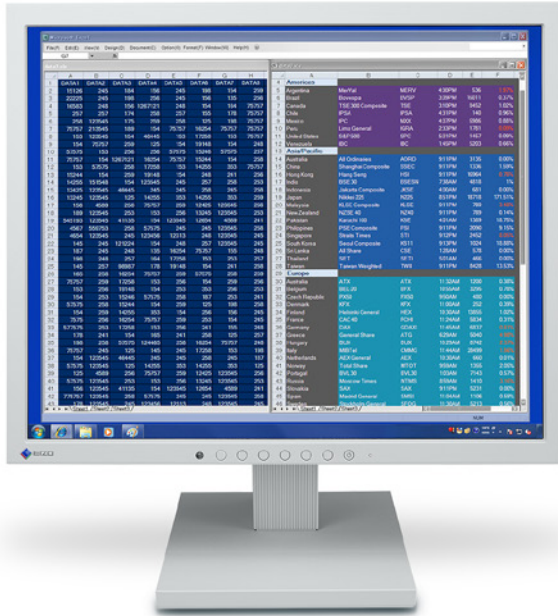




EIZO[®]

FlexScan[®] S1703-A

17.0" (43.3 cm) LCD Monitor



17-Inch Square Monitor with 5-Year Warranty and Long-Term Supply

Digital and Analog Inputs

With both DVI-D and D-Sub mini 15-pin inputs, you can use a computer that has either a digital or an analog graphics board (or both if connected to two computers), and quickly switch between the inputs via a front panel button.



Automatic Image Adjustment

The Self Adjustment function automatically adjusts the display to suppress flicker and drift. Furthermore, monitor cables produced to minimize noise are bundled with the S1703-A.

■ Standard Cables



Digital Cable



Analog Cable

High color reproduction with smooth gradation

LED-backlit panel

Speaker / headphone jack

Built-in power supply

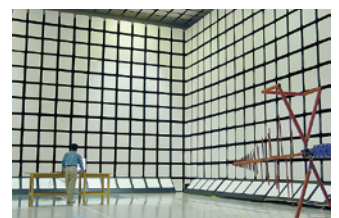
Long-Term Supply

The S1703-A is the successor to the S1703. With this stable supply of 17-inch square model monitors it can be adopted with confidence with legacy equipment and systems.

Built to Last Five Years

The S1703-A comes with a 5 year warranty*. Even if the initial purchase price of the FlexScan S1703-A is higher than another 17-inch monitor, the TCO (total cost of ownership) will likely be lower due to the significantly longer buying cycle and less need for repair.

*Up to 30,000 hours of use



FlexScan® S1703-A

Optimized Brightness with Auto EcoView

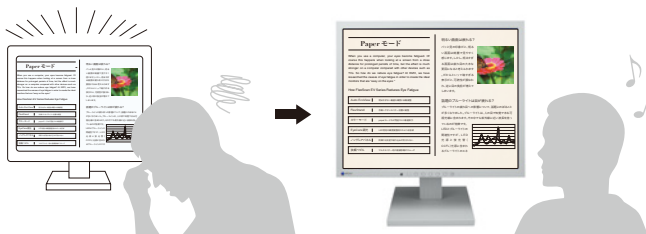
The Auto EcoView function measures ambient light and optimizes the screen's brightness to minimize eye fatigue caused by bright screens in dark conditions.



The screen brightness automatically decreases in dark rooms.

Reduce Blue Light by 80%

The S1703-A has a display mode called Paper Mode which changes the color of the screen to resemble paper. In addition to using the Auto EcoView function to adjust the screen brightness, documents and electronic books can be viewed resembling physical paper. This significantly cuts blue light, reducing eyestrain.



Flicker Prevention

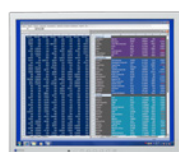
A modulated light adjustment function prevents flicker at low brightness settings to reduce eye fatigue.

Anti-Glare Treatment

A non-glare screen reduces eye fatigue by dissipating reflective light that otherwise makes the screen difficult to view. Furthermore, the surface of the bezels is treated to prevent light reflection.



Glare Panel



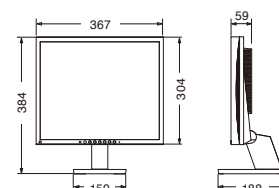
Anti-Glare Panel

Specifications

Model Variations	With Height Adjustable Stand, With Tilt Stand, Without Stand	
Cabinet Color	Gray, Black	
Panel	Type	TN
	Backlight	LED
	Size	17.0" / 43.3 cm
	Native Resolution	1280 x 1024 (5:4 aspect ratio)
	Viewable Image Size (H x V)	337.9 x 270.3 mm
	Pixel Pitch	0.264 x 0.264 mm
	Display Colors	16.77 million from a palette of 1.06 billion
	Viewing Angles (H / V, typical)	170°, 160°
	Brightness (typical)	250 cd/m ²
	Contrast Ratio (typical)	1000:1
Response Time (typical)	5 ms (black-white-black)	
Video Signals	Input Terminals	D-Sub mini 15 pin, DVI-D 24 pin (with HDCP)
	Digital Scanning Frequency (H / V)	31 - 64 kHz, 59 - 61 Hz
	Analog Scanning Frequency (H / V)	31 - 64 kHz, 55 - 61 Hz
	Sync Formats	Separate
Audio	Speakers	0.5 W + 0.5 W
	Input Terminals	3.5 mm stereo jack
	Output Terminals	3.5 mm headphone jack
	Sound Adjustment	Volume
Power	Power Requirements	AC 100 - 240 V, 50 / 60 Hz
	Maximum Power Consumption	18 W
	Typical Power Consumption	8 W
	Power Save Mode	0.5 W or less
	Power Management	Power Save (DPM, DMPM)
Features & Functions	Preset Modes	Color Mode (User1, User2, sRGB, Paper)
	Auto EcoView	Yes
	OSD Languages	English, French, German, Italian, Japanese, Simplified and Traditional Chinese, Spanish, Swedish
Physical Specifications	Others	Analog Adjustment (Clock, Phase, Position, Auto Range, Color Adjustment (Brightness, Contrast, Temperature, Gain, Reset), Power Indicator, Product Information (name, serial number, resolution, operating time, etc.), OSD Menu Rotation, Key Lock, Reset
	Dimensions (Landscape, W x H x D)	With Height Adjustable Stand: 367 x 391.5 - 491.5 x 205 mm With Tilt Stand: 367 x 384 x 188 mm
	Net Weight	With Height Adjustable Stand: 5.5 kg / 12.1 lbs With Tilt Stand: 4.4 kg / 9.7 lbs
	Net Weight (Without Stand)	3.6 kg / 7.9 lbs
	Height Adjustment Range	With Height Adjustable Stand: 100 mm With Tilt Stand: -
	Tilt	With Height Adjustable Stand: 30° Up, 0° Down With Tilt Stand: 30° Up, 5° Down
	Swivel	With Height Adjustable Stand: 35° Right / 35° Left With Tilt Stand: -
	Pivot	With Height Adjustable Stand: 90° With Tilt Stand: -
	Hole Spacing (VESA Standard)	100 x 100 mm
	Operating Temperature	5 - 35 °C
Operating Humidity (R.H., non condensing)	20 - 80 %	
Certifications & Standards	TUV/Ergonomics, TUV/GS, RCM, CE, CB, cTUVus, FCC-B, CAN ICES-3 (B), TUV/S, VCCI-B, RoHS, WEEE, China RoHS, CCC, EAC	
Supplied Accessories	AC power cord, signal cables (D-Sub - D-Sub, DVI-D - DVI-D), audio cable, setup guide, 4 screws for mount option	
Warranty	Five Years	

With current LCD technology, a panel may contain a limited number of missing or flickering pixels. If the monitor is left on continuously over a long period of time, dark smudges or burn-in may appear. To maximize the life of the monitor, we recommend the monitor be turned off periodically.

Dimensions (Unit : mm)



EIZO Corporation

153 Shimokashiwano, Hakusan, Ishikawa 924-8566 Japan

Phone: +81-76-277-6792 Fax: +81-76-277-6793

www.eizo.com

All product names and logos are trademarks or registered trademarks of their respective companies.

FlexScan and EIZO are registered trademarks of EIZO Corporation.

Specifications are subject to change without notice.