

Guia de Instalação

ColorEdge® CS2730

Monitor de LCD com gerenciamento de cores

Importante

Leia as PRECAUÇÕES, este Guia de Instalação e o Manual do usuário armazenados no CD-ROM com atenção para se familiarizar com o uso seguro e eficiente deste produto. Conserve este guia para futura referência.














Para as últimas informações de produto, incluindo o Manual do Usuário, consulte o nosso site.

<http://www.eizoglobal.com>



Copyright© 2016 EIZO Corporation All rights reserved.

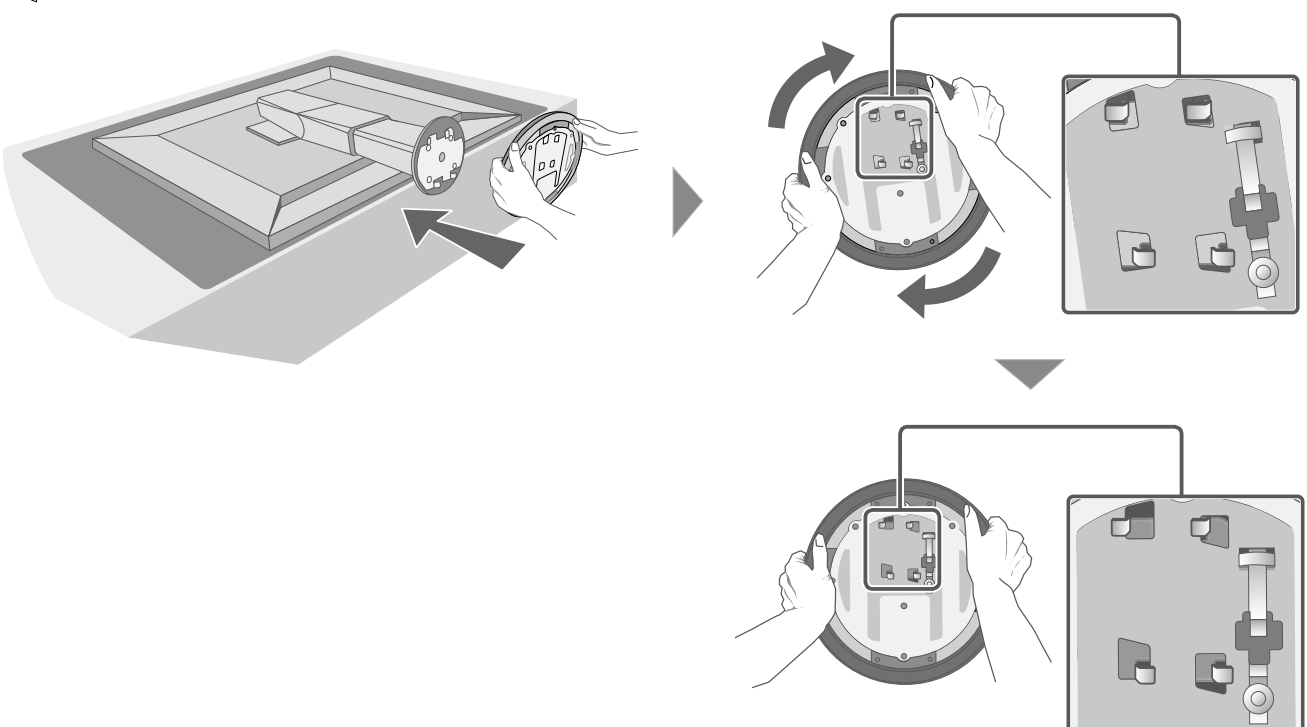
1. Conteúdo do pacote

| | | |
|--|--|---|
|  <ul style="list-style-type: none">• Monitor |  <ul style="list-style-type: none">• Setup Guide (Guia de Instalação) |  <ul style="list-style-type: none">• PRECAUTIONS (PRECAUÇÕES) |
|  <ul style="list-style-type: none">• Suporte de cabo |  <ul style="list-style-type: none">• EIZO LCD Utility Disk |  <ul style="list-style-type: none">• ColorNavigator Quick Reference (Guia de referência rápida ColorNavigator) |
|  <ul style="list-style-type: none">• Base |  <ul style="list-style-type: none">• Assembly Manual (Manual de Montagem) |  <ul style="list-style-type: none">• Parafusos de montagem |
|  <ul style="list-style-type: none">• DD200DL DVI Dual Link cabo |  <ul style="list-style-type: none">• PM200 DisplayPort cabo | |
|  <ul style="list-style-type: none">• UU200SS (USB 3.0) cabo USB |  <ul style="list-style-type: none">• Cabo de alimentação | |

2. Montagem da base



- Para mais detalhes, consulte o “Manual de Montagem”.

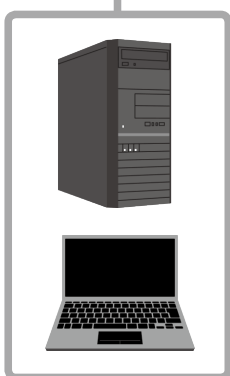
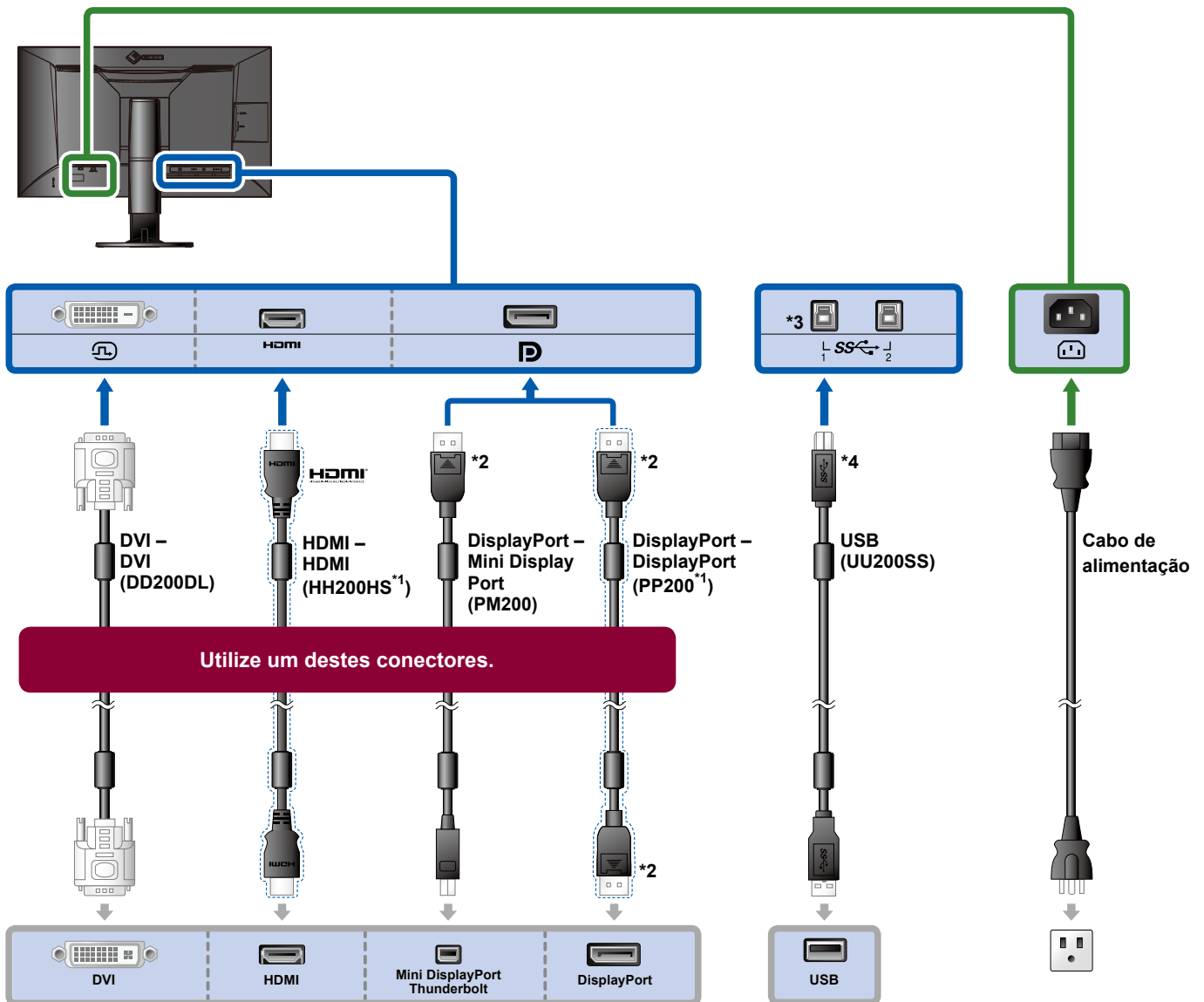


3. Conexões

1.

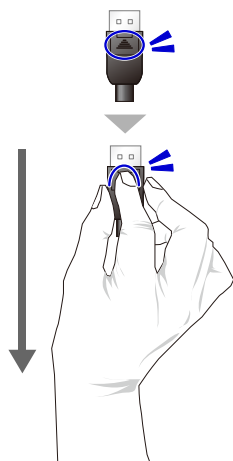
2.

3.



*1 opção

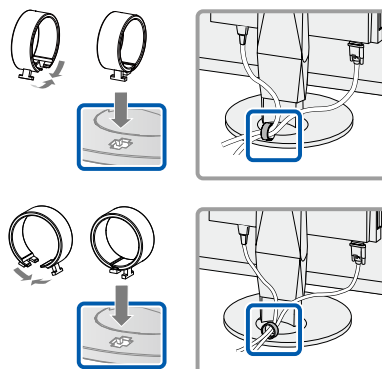
*2 Como remover



*3 Usar porta 1. Por padrão, a porta 2 USB upstream é desabilitada. Para modificar as configurações, consulte o Manual do Usuário do monitor.

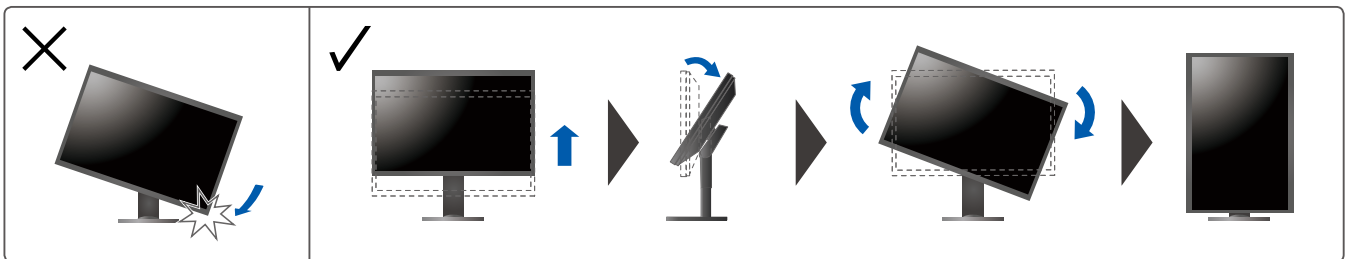
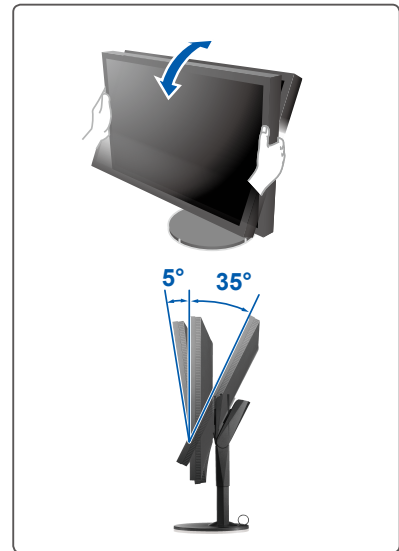
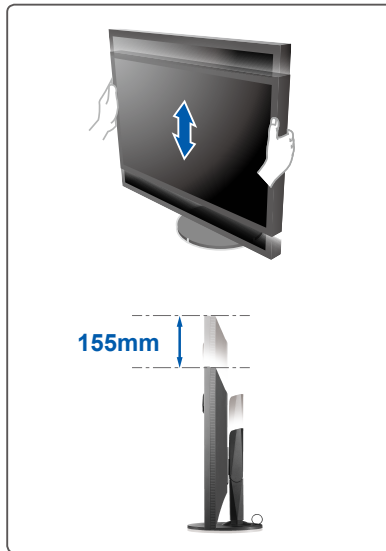
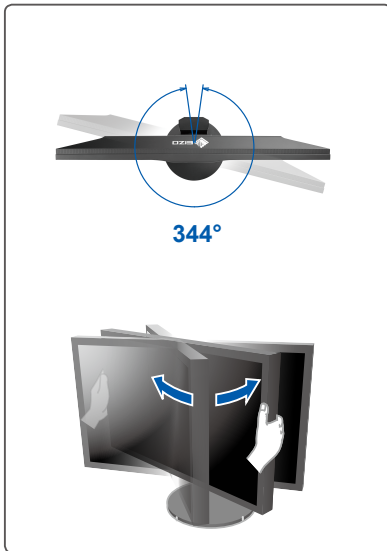
*4 Certifique-se sempre de que este cabo esteja conectado ao usar o ColorNavigator 6 ou o Quick Color Match.

4.



A utilização do suporte de cabo atrás da armação mantém os cabos juntos de forma organizada.

4. Ajuste de ângulo e altura

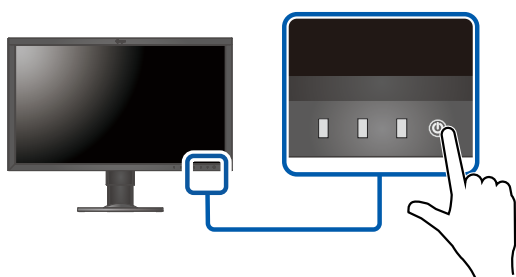


5. Tela do vídeo

1. Interruptor de alimentação geral



2. Botão ligar/desligar

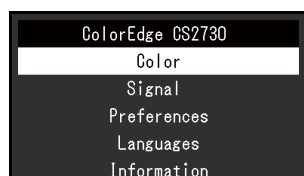
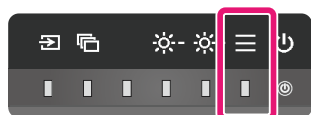
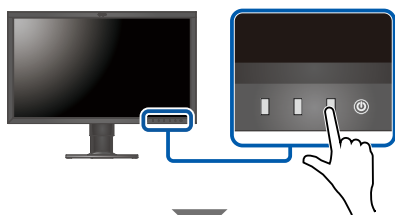


3. Resolução recomendada

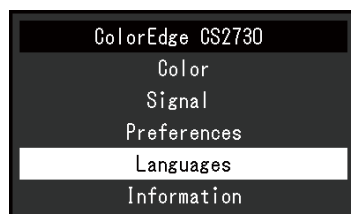


6. Língua

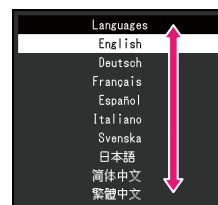
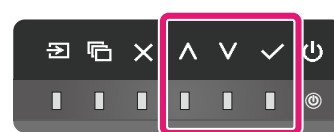
1.



2.



3.




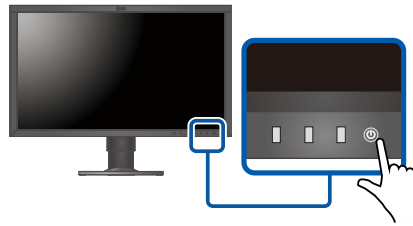
ColorNavigator




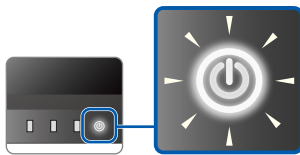
- Para as instruções de operação, consulte a “Consulta rápida” e o Manual do Usuário do ColorNavigator (armazenado no CD-ROM).


Problema de falta de imagem

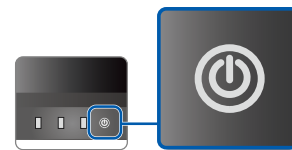
Toque  no monitor para ligar a energia.



 ilumina-se de branco.



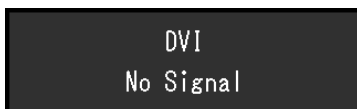
 não acende.




Ligue o monitor.

- Ligue corretamente o interruptor de energia principal na parte de trás do monitor.
- Confira se o cabo de alimentação está inserido corretamente.

Uma mensagem aparece na tela.



Inserir um sinal.

- Toque  para alternar o terminal de entrada no qual o cabo de sinal está conectado.*1
- Confira que o cabo de sinal está conectado corretamente.
- O PC pode estar em modo de hibernação. Experimente o mouse ou o teclado.
- Verifique se o PC está ligado.

Se as etapas acima mencionadas não resolverem o problema, experimente reinicializar o PC.

- Ligue corretamente o interruptor de energia principal na parte de trás do monitor.
- Reinicialize o PC.

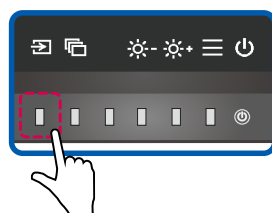
Uma mensagem aparece na tela.



O sinal correto não é inserido pelo PC.

- Reinicialize o PC.
- O disco gráfico no PC pode não estar funcionando corretamente. Para mais detalhes, contate o revendedor ou o fabricante do computador.

*1



Nenhuma mensagem aparece na tela.

- Aumentar "Brightness" (Brilho).^{*2}
- Reinicialize o PC.

*2

