



## EIZO Broadens LCD Monitor Lineup with 19-inch Model for the Financial Market

*FlexScan® L795 provides ergonomic design and advanced image control*

Matto, Japan, November 5, 2003 – Eizo Nanao Corporation today introduced the FlexScan L795 LCD monitor for trading rooms and other areas of the financial market. The FlexScan L795 is a



19" variation of the 18.1" FlexScan L695 released earlier this year, sharing the thin bezel design and incorporating EIZO's latest ASIC (Application Specific Integrated Circuit). This ASIC includes functions that help traders work more efficiently such as hardware portrait display and picture-in-picture from two PC sources. Backed by EIZO's industry-leading five year warranty, the FlexScan L795 presents a complete package of quality, innovative features, and long-term reliability.

The FlexScan L795 provides wide 170° viewing angles, a native resolution of 1280 × 1024, 250 cd/m<sup>2</sup> brightness, and 500:1 contrast ratio. DVI-I and D-Sub inputs provide compatibility with both digital and legacy analog graphics boards.

### EIZO-Developed ASIC

This fourth generation chip offers two new features – ActiveRotation and ActiveShot. These features provide greater speed, efficiency, and reliability for the trading room floor.

#### ActiveRotation

ActiveRotation displays images in portrait mode (1024 × 1280 resolution only) without the need for special software, ensuring faster drawing speeds, overall system stability, and no compatibility problems with other application software. It utilizes a USB connection so switching to portrait mode is possible without restarting the PC or using the OSD menu. EIZO is working closely with several graphics board manufacturers such as Matrox, ATI, and 3DLabs to ensure driver support for ActiveRotation.

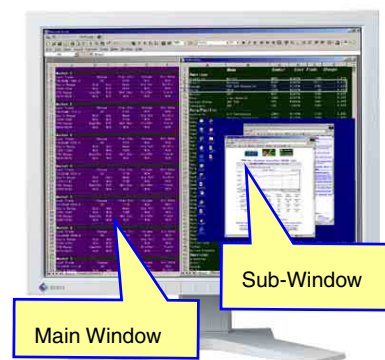
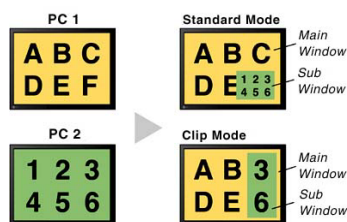
#### Portrait Display with ActiveRotation

1. Landscape display
2. Vertical signal is outputted from the graphics board
3. ActiveRotation rotates the image 90°
4. Panel turns 90° for portrait display.



#### ActiveShot

EIZO's ActiveShot offers an industry first picture-in-picture from two PC sources<sup>1</sup>. Traders can perform two tasks on one screen such as inputting data while watching stock price movements without having to





switch between application windows. ActiveShot comes with Standard and Clip modes. Standard mode shows the entire screen from the second PC source in the sub-window. With Clip mode, the user can select just the desired area of the screen for display in the sub-window. In both modes, the position of the sub-window can be moved as required.

#### Gamma Correction

A 10-bit LUT automatically converts 8-bit data (256 gradations) received from the computer to 10-bit (1,021 gradations) and then reassigns this data back to 8-bits with the ideal gamma values. For color-rich images, this means that even subtle mid-tones are displayed correctly.

#### SlimEdge Design

EIZO's innovative SlimEdge design features a thin bezel on all four sides of the monitor. Tilt and swivel angles are 41° and 70°, and the stand has a height adjustment range of 100 mm. The panel houses the power supply unit and can be removed from the stand for arm or wall mounting in accordance with VESA standards. For customers that do not require stands, a panel only version (FlexScan L795-F) is also available with three panels per box.

#### Additional Features

- USB 2.0 hub includes one upstream and two downstream ports for high speed connection to other USB peripherals.
- ScreenManager Pro for LCD utility software<sup>2</sup> that allows all OSD functions to be handled with the mouse or keyboard through a USB connection with the PC rather than the monitor's front buttons.
- Support for separate sync, composite sync, and sync-on-green analog signal types, ensuring compatibility with workstations and standards PCs.

#### 5 Year Warranty

EIZO stands behind the workmanship of the FlexScan L795 with an industry leading five year warranty. This warranty is valid in every country and territory where EIZO authorized distributors are located.



*The usage time is limited to 30,000 hours or less, and the warranty period of the LCD panel and backlight is limited to three years from the date of purchase.*

#### Optional Accessories

EIZO has prepared several accessories that ensure greater functionality of the FlexScan L795.

- LS-HM1-D – Height adjustable stand that holds two monitors.
- LA-130-D and LA-120-D flexible arms with forward/backward, up/down, and side-to-side movement. The LA-130-D has three rotation axes and the LA-120-D has two rotation axes.
- i:Sound L2 – Sound unit with dual speakers of 2 watts each that attaches directly to the bottom of the panel.
- FP-701 – A thin, highly transparent sheet that fits over the screen surface to protect against dust and scratches.
- Screen Administrator –EIZO developed software that allows system administrators to perform setup and management tasks on Windows-based client PCs and select EIZO monitors<sup>3</sup> from a control PC.



#### Compliance with Regulatory Standards

Complies with some of the strictest standards in the industry including the new TCO'03<sup>4</sup>, TÜV Rheinland/Ergonomics, and the EPA ENERGY STAR<sup>®</sup> Program.

#### EIZO Internal Environmental Label "EIZO Eco Products 2002"

The FlexScan L795 carries this in-house label signifying that it meets several strict internal requirements such as the use of lead-free solder and chrome-free steel plates, and that the user's manual is made with chlorine-free, recyclable paper.

#### Availability

The FlexScan L795 will go on sale worldwide in early December of 2003. It is available in a choice of gray or black.

#### About EIZO

Eizo Nanao Corporation is a leading global manufacturer of high-end visual display products with a wide range of LCD, CRT, and PDP monitors, and Windows-Based Terminals. The image quality, long-term reliability, and innovative features of EIZO monitors make them the products of choice in many financial trading rooms, hospitals, back offices, and design studios throughout the world. EIZO is based in Japan and represented in over thirty countries by a network of exclusive distributors.

For more information, please contact:

Eizo Nanao Corporation  
153 Shimokashiwano  
Matto, Ishikawa 924-8566  
Japan  
Phone: +81 76 277-6792  
Fax: +81 76 277-6793  
<http://www.eizo.com/>

<sup>1</sup>ActiveShot and ActiveRotation cannot be used at the same time.

<sup>2</sup>ScreenManager Pro for LCD can only be used with the Microsoft<sup>®</sup> Windows<sup>®</sup> 98SE, Me, 2000, and XP operating systems.

<sup>3</sup>Screen Administrator cannot be used with the monitors of any other manufacturer.

<sup>4</sup>Gray cabinet only. Black cabinet is TCO'99 certified.

*All product names are trademarks or registered trademarks of their respective companies. Screen Administrator and i-Sound are trademarks, and EIZO and FlexScan are registered trademarks of Eizo Nanao Corporation.*