



FlexScan T566 Opens New World of Imaging Possibilities

Maximum 400 cd/m² brightness, EIZO original DesktopViewer software, and industry's first PRINT Image Matching™ enabled monitor add up to the most versatile product in the 17" class



Matto, Japan, July 9, 2002 – Eizo Nanao Corporation today announced the release of the FlexScan T566, a 17-inch CRT monitor that offers unparalleled versatility for use with almost any type of application. The FlexScan T566 incorporates a wealth of new features such as its proprietary DesktopViewer software and PRINT Image Matching (P.I.M.) compatibility for superior color management with digital cameras and printers. EIZO also makes it extremely easy to fit the image parameters to the application with its one touch Fine Contrast function and ScreenManager Pro for USB software.

“Since it is difficult to find a single model that meets the specific needs of all employees, many companies devote a great deal of resources in choosing different models for each department,” said Kunihiro Arata, General Manager of Eizo Nanao Corporation’s Overseas Sales & Marketing Division. “The FlexScan T566 can handle virtually any task with ease whether it be displaying detailed text at high resolutions, working with digital images, or the editing and playback of video.”

The FlexScan T566 incorporates a flat aperture grill CRT for reduced glare and distortion with a fine trio pitch or 0.25 mm. The recommended resolution is 1280 × 1024 at a maximum refresh rate of 89 Hz, and the maximum resolution 1600 × 1200 at a 76 Hz refresh rate. Both D-sub mini 15 pin and BNC × 5 ports are included for simultaneous connection of two computers, and switching between the two is as simple as pressing a button on the front panel.

ScreenManager® Pro for USB

This EIZO software program¹ streamlines the control of the on-screen image by bypassing the standard OSD menu and allowing screen adjustments to be made with the mouse or keyboard. It also offers several advanced imaging functions such as DesktopViewer, WindowMovie mode, and ActiveGamma that empower the user to quickly and conveniently take advantage of the FlexScan T566’s advanced imaging capabilities and attain the ideal screen settings.

DesktopViewer

Available for the first time with the FlexScan T566, EIZO’s new DesktopViewer provides a wide range of advanced imaging functions. DesktopViewer can display images (jpeg and bitmap only) or any selected area of the screen in an overlay window up to a maximum brightness of 400 cd/m². The image can then be freely enlarged or reduced, and a color editing function allows for altering brightness, contrast, chroma, hue and gamma values³.

Because DesktopViewer uses the graphics card's video memory, capturing an image and changing its size are performed more quickly and smoothly than with conventional software.

For business presentations or showroom use, DesktopViewer includes a slideshow function that shows all images in a specified folder. The user can set both the window size and time each image is displayed. In addition to still images, DesktopViewer also supports video playback.



Image captured and displayed in overlay window

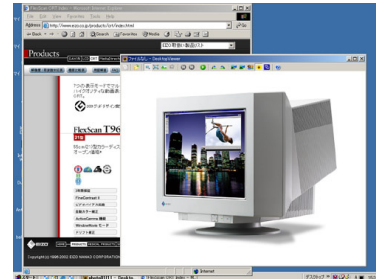


Image expanded

To assure each image in the overlay window is displayed to perfection, DesktopViewer comes with 5 user selectable modes with various gamma and sharpness settings.

	Normal	Nature	Portrait	Macro	P.I.M.
Contrast	85%				
Color Temperature	6500K				
Brightness (Max)	300 cd/m ² (400 cd/m ²)				
Gamma Control	Fixed	Fixed	Fixed	Fixed	P.I.M. Standard
Sharpness	Fixed (Mild)	Fixed (Normal)	Fixed (Soft)	Fixed (Strong)	Off
Recommended Use	Normal photographs (Image that do not correspond to the other 4 modes)	Scenic images	Photographs of people	Photographs taken in macro mode	For color matching with P.I.M.-enabled digital cameras and printers

*The figures for contrast, color temperature, and brightness are default settings and can be changed by the user.

P.I.M. (PRINT Image Matching™) Support

The FlexScan T566 is the industry's first monitor to support P.I.M. This new technology was developed by Seiko Epson Corporation to assure that digital cameras and printers work together to produce the best possible prints. By utilizing DesktopViewer's P.I.M. mode, color management with P.I.M.-enabled digital cameras and printers is greatly simplified.

Mode Selection with Fine Contrast and ActiveGamma

EIZO's Fine Contrast function offers the widest choice of viewing modes and the simplest way of achieving them to take advantage of the high brightness capability of the CRT. Five modes are instantly accessible by pressing a button on the front panel: Text, Browser, Picture, Graphic and Movie. Each mode has its own default brightness, sharpness, and color



temperature settings, which can be further adjusted in the ScreenManager OSD menu. Also in the OSD menu is an sRGB mode which supports this color space to achieve color matching with software and other peripheral devices including scanners, printers, and digital cameras that are also sRGB compliant.

A WindowMovie mode is accessible in the ScreenManager Pro for USB software. With this mode, video playback software can be displayed in a bright overlay window, and the brightness setting for the rest of the screen altered by the user⁴. This allows for watching a DVD or streaming video in a brightly lit window, while devoting the rest of the screen to another task such as writing e-mail.



For faster switching among modes, EIZO has included an ActiveGamma⁵ function that lets the user assign any of the Fine Contrast modes, sRGB mode, or WindowMovie mode to a software application⁵. When that application is activated, the screen instantly changes to the assigned mode so there is no need to toggle with the front button or go into the OSD menu.

Color Restoration

EIZO CRT monitors have long been recognized for their ability to withstand years of demanding use, and the Color Restoration assures that image quality remains at the highest levels of accuracy over the life of the FlexScan T566. Activating this function returns brightness and color tone back to their original factory settings.

Compliance with Leading Energy and Ergonomic Standards

The FlexScan T566 meets the strictest ergonomic and energy standards including TÜV ECO Circle 2001 and TCO'99, the EPA ENERGY STAR[®] Program and Energy 2000.

i-Sound™ Sound Unit

For audio enhancement of multimedia applications, EIZO offers the *i*-Sound. This sound unit slides onto the front bezel of the monitor and is equipped with two speakers, two stereo mini-jack cables, and a microphone, all powered directly from the monitor. Several external jacks are provided for headphones, a headset, CD or tape players. The unit is sold separately.

Availability

The FlexScan T566 is currently shipping and will go on sale worldwide in late July. A black color option is available in some countries in addition to the standard gray cabinet. The *i*-Sound also comes in a choice of gray or black.

About EIZO

Eizo Nanao Corporation, the specialist in the development and production of state-of-the-art



display systems, is based in Japan and represented in over thirty countries by a network of exclusive distributors.

For more information, please contact:

Eizo Nanao Corporation
153 Shimokashiwano
Matto, Ishikawa 924-8566
Japan
Phone: +81 76 277-6792
Fax: +81 76 277-6793
<http://www.eizo.com/>

¹To utilize ScreenManager Pro for USB, the monitor must be connected to the PC via the upstream port. This software is compatible with Windows 98SE/ME/2000/XP operating systems only.

²DesktopViewer is compatible with the Windows 2000/XP operating systems only.

³Support for the color adjustment functions varies with the graphics card used.

⁴WindowMovie Mode is compatible with the Windows 98SE/ME/2000/XP operating systems only. Support for this function varies with the graphics card used.

⁵ActiveGamma is compatible with the Windows 98SE/ME/2000/XP operating systems only.

All product names are trademarks or registered trademarks of their respective companies. i:Sound is a trademark, and FlexScan, EIZO, and ScreenManager are registered trademarks of Eizo Nanao Corporation.