



EIZO Releases Comprehensive 21" CRT Monitor

FlexScan® T966 offers maximum luminance of 230 cd/m², ScreenManager® Pro for USB software, and PRINT Image Matching II and Exif 2.2 support



Matto, Japan, October 15, 2002 – Eizo Nanao Corporation today introduced the FlexScan T966 tension mask CRT monitor. With images up to 50% brighter than EIZO's previous 21" offerings¹, 6 user-selectable display modes, and support for both PRINT Image Matching II (P.I.M.) and Exif Print (Exif 2.2) digital camera image file formats, the FlexScan T966 stands as a versatile product for almost any application including graphic design, CAD/CAM, video and digital image editing, and desktop publishing. Also featured is EIZO's ScreenManager Pro for USB software, which simplifies usability by allowing all screen adjustments and display modes changes to be made with just the mouse or keyboard.

“Professionals requiring not only high-end performance for multiple applications but also unmatched ease of use will find the FlexScan T966 to be the perfect choice,” said Kunihiro Arata, General Manager of Eizo Nanao Corporation's Overseas Sales & Marketing Division. “This model also offers digital camera users the benefit of seeing their images reproduced accurately on-screen through P.I.M. II and Exif 2.2 support.”

Technical Features

The FlexScan T966 incorporates a flat aperture grill CRT to reduce glare and distortion. The trio pitch is an extremely sharp 0.24 mm for pinpoint focus across the entire screen. The recommended resolution is 1600 × 1200 at a maximum refresh rate of 104 Hz, and the maximum resolution 2048 × 1536 at an 80 Hz refresh rate. Both D-sub mini 15 pin and BNC × 5 ports are included for simultaneous connection of two computers, and switching between the two is as simple as pressing a button on the front panel.

ScreenManager Pro for USB

This EIZO software program² streamlines the control of the on-screen image by bypassing the standard OSD menu and allowing screen adjustments to be made with the mouse or keyboard. It also offers several advanced functions such as DesktopViewer, WindowMovie mode, and ActiveGamma that empower the user to quickly and conveniently take advantage of the FlexScan T966's imaging capabilities and attain the ideal screen settings.

DesktopViewer

EIZO's new DesktopViewer³ provides a wide range of advanced imaging functions. DesktopViewer can display images (jpeg, tiff, and bitmap only) or any selected area of the screen in a brightly lit overlay window. The image can then be freely enlarged or reduced, and a color editing function allows for altering brightness, contrast, chroma, hue and gamma values⁴.

Because DesktopViewer uses the graphics card's video memory, capturing an image and changing its size are performed more quickly and smoothly than with conventional software. For business presentations or showroom use, DesktopViewer includes a slideshow function that shows all images in a specified folder. The user can set both the window size and time each image is displayed. In addition to still images, DesktopViewer also supports video playback.

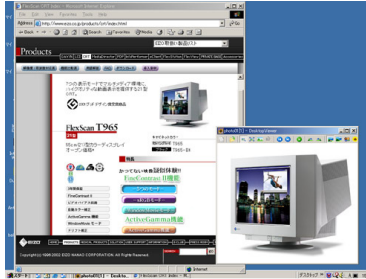


Image captured and displayed in overlay window

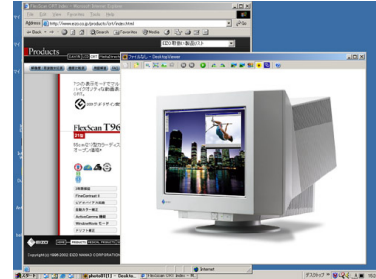


Image expanded

To assure each image in the overlay window is displayed to perfection, DesktopViewer includes 5 user selectable modes with various gamma and sharpness settings.

	Normal	Nature	Portrait	Macro	P.I.M.
Contrast	92%				
Color Temperature	6500K				
Brightness (Max)	170 cd/m ² (200 cd/m ²)				
Gamma Control	Fixed	Fixed	Fixed	Fixed	P.I.M. Standard Value
Sharpness	Fixed (Mild)	Fixed (Normal)	Fixed (Soft)	Fixed (Strong)	Off
Recommended Use	Normal photographs (Image that do not correspond to the other 4 modes)	Scenic images	Photographs of people	Photographs taken in macro mode	For color matching with P.I.M.-enabled digital cameras and printers

*The figures for contrast, color temperature, and brightness are default settings and can be changed by the user.

PRINT Image Matching II and Exif 2.2 Support

The FlexScan supports both Seiko Epson Corporation's P.I.M. II and JEITA (Japan Electronics and Information Technology Industries Association) and JCIA's (Japan Camera Industry Association) Exif 2.2 standards. These standards allow digital camera manufacturers to assign image specific parameters for printing such as gamma, color space matrix, contrast, chroma, and exposure mode to assure high quality digital prints that match the original shots as closely as possible. By utilizing the P.I.M. mode, color management between the FlexScan T966 and P.I.M. II and Exif 2.2-enabled digital cameras and printers is greatly simplified.

Mode Selection with Fine Contrast and ActiveGamma

EIZO's Fine Contrast function offers the widest choice of viewing modes and the simplest way of achieving them to take advantage of the high brightness capability of the CRT. More than just a way of switching between low and high brightness settings, Fine Contrast offers five modes that are instantly accessible by pressing a button on the front panel: Text, Browser, Picture, Graphic and Movie. Each mode has its own default brightness, sharpness, and color temperature settings,



which can be further adjusted in the ScreenManager OSD menu. Also in the OSD menu is an sRGB mode that supports this color space to achieve color matching with software and other peripheral devices including scanners, printers, and digital cameras that are also sRGB compliant.

A WindowMovie mode is accessible in the ScreenManager Pro for USB software. With this mode, video playback software can be displayed in an overlay window, and the brightness setting for the rest of the screen altered by the user⁵. This allows for watching video in a brightly lit window while devoting the rest of the screen to another task such as writing e-mail.

For faster switching among modes, EIZO has included an ActiveGamma⁶ function that lets the user assign any of the Fine Contrast modes, sRGB mode, or WindowMovie mode to a software application⁵. When that application is activated, the screen instantly changes to the assigned mode so there is no need to toggle with the front button or use the OSD menu.

Color Restoration

EIZO CRT monitors have long been recognized for their ability to withstand years of demanding use, and Color Restoration assures that image quality remains at the highest levels of accuracy over the life of the FlexScan T966. Activating this function returns brightness and color tone back to their original factory settings.

Additional Features of the FlexScan T966

- USB hub with one upstream and four downstream ports.
- Digital Signal Processor reduces geometric distortion and moiré.
- Two signal filters correct smear and ghosting if a low quality signal is sent from the graphics card.
- Automatic Color Correction compensates for discrepancies in video signal output levels from a graphics card, and unifies color temperature and brightness when the monitor is connected to two computers are connected, even if the operating systems and graphics cards are different.
- Uniformity Adjustment counteracts disturbances to on-screen white uniformity caused by the earth's magnetic field.
- TÜV ECO Circle 2001 and TCO'99⁷ certified for user safety and comfort.
- Power saving design that meets EPA Energy Star Program, standards by lowering energy consumption to less than three watts in power save mode.
- Optional *i*-Sound™ unit with two one-watt speakers slides onto the front bezel of the monitor without increasing footprint.

Availability

The FlexScan T966 is now shipping and will go on sale worldwide in November. The cabinet is available in both gray and black.

About EIZO

Eizo Nanao Corporation, the specialist in the development and production of state-of-the-art display systems, is based in Japan and represented in over thirty countries by a network of exclusive distributors.



For more information, please contact:

Eizo Nanao Corporation
153 Shimokashiwano
Matto, Ishikawa 924-8566
Japan
Phone: +81 76 277-6792
Fax: +81 76 277-6793
<http://www.eizo.com/>

¹FlexScan T965 produced a maximum brightness of 154 cd/m²

²To utilize ScreenManager Pro for USB, the monitor must be connected to the PC via the upstream port. This software is compatible with Windows 98SE/ME/2000/XP operating systems only.

³DesktopViewer is compatible with the Windows 2000/XP operating systems only.

⁴Support for the color adjustment functions varies with the graphics card used.

⁵WindowMovie Mode is compatible with the Windows 98SE/ME/2000/XP operating systems only. Support for this function varies with the graphics card used.

⁶ActiveGamma is compatible with the Windows 98SE/ME/2000/XP operating systems only.

⁷Gray cabinet only.

#

All product names are trademarks or registered trademarks of their respective companies. i:Sound is a trademark, and FlexScan, EIZO, and ScreenManager are registered trademarks of Eizo Nanao Corporation.