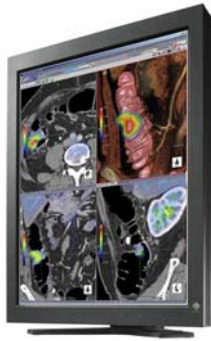




## EIZO Announces RadiForce® RX210 LCD Monitor for Color and Monochrome Imaging at JFR 2006

Paris, France, October 21, 2006 – Eizo Nanao Corporation (“EIZO”) today announced the release of the RadiForce RX210, a 2 megapixel color LCD monitor, at JFR 2006 (Journées Françaises de Radiologie). The RadiForce RX210 meets the increasing need of hospitals for a monitor that can display both grayscale and color images for diagnostic imaging.



Hospitals typically use color monitors for imaging modalities like CT, MRI, and endoscopy, and high brightness monochrome monitors for viewing high resolution images such as CR and DR. In the past, departments purchased monitors according to the type of images they displayed, but image sharing between departments coupled with advances in image processing technology like 3D rendering and fusion have created the need for high level multi-purpose monitors that can display both color and monochrome images.

With the RadiForce RX210, viewing color and monochrome images can be done on one monitor. The high brightness of 600 cd/m<sup>2</sup> and contrast ratio of 600:1 are close to the brightness and contrast ratio figures of monochrome monitors, ensuring the RX210 is suitable for CR and DR image display.

To meet monitor quality control standards as established in AAPM, DIN, and JESRA, the RX210 is the first RadiForce color monitor to come equipped with EIZO’s Digital Uniformity Equalizer (DUE) function. Due to unique characteristics of the backlight and liquid crystals, the luminance of LCD monitors is uneven across the screen. To compensate, the luminance level of each monitor is measured at EIZO’s factories in Japan and then DUE adjusts the luminance according to the measured data.

The RX210 comes with a CAL Switch function which has various calibration modes for different modalities such as CR, CT, and endoscopy. Switching between modes can be done by pressing a button on the front bezel, or by using the bundled ScreenManager Pro for Medical software to assign a mode to a specific application so that when the application is opened, it automatically displays images in the assigned mode.

ScreenManager Pro for Medical includes additional functions such as Independent Image Setting (IIS) and backlight saver. IIS allows for any specific area of an image to be adjusted and pre-set to various grayscale gradations and luminance levels. The backlight saver function turns the monitor’s secondary power off when a screensaver is activated and then turns it back on again when the screen comes out of screensaver mode for reduced power consumption of the monitor during prolonged usage.

The RadiForce RX210 is compatible with EIZO’s Clip-On Swing Sensor<sup>1</sup> for precise remote calibration and image consistency operations. Attaching to the upper bezel, the Clip-On Swing Sensor does not interfere with the viewing area of the screen and conveniently becomes enabled



and visible only when remote quality control operations are being performed. With this sensor and EIZO's quality control software RadiNET™ Pro and RadiCS™ (sold separately), quality control technicians will be able to remotely calibrate to the DICOM Part 14 standard and set extremely precise values for gamma, brightness, and grayscale gradations.

For customer assurance, the RadiForce RX210 is backed by a three-year limited warranty.<sup>2</sup> It complies with stringent medical, safety, and EMC emissions standards including TÜV/GM, the CE Medical Device Directive and cTÜVus. EIZO's quality management system for medical devices is ISO 13485 certified.

#### Availability

The RadiForce RX210 will be available worldwide in December. Please contact the EIZO subsidiary or distributor in your country for details. Visitors to JFR, now underway at CNIT La Defense in Paris, France, can have a first look at the RX210 in Level C, Booth #35.

#### About EIZO

Eizo Nanao Corporation is a leading global manufacturer of high-end visual display products with a wide range of LCD monitors. The image quality, long-term reliability, and innovative features of EIZO monitors make them the product of choice in many financial trading rooms, hospitals, back offices, and design studios throughout the world. EIZO is based in Japan and represented in over fifty countries by a network of exclusive distributors.

For more information, please contact:

Eizo Nanao Corporation  
153 Shimokashiwano  
Hakusan, Ishikawa 924-8566  
Japan  
Phone: +81 76 277-6792  
Fax: +81 76 277-6793  
[www.radiforce.com](http://www.radiforce.com)  
[www.eizo.com](http://www.eizo.com)

*RadiNET™ and RadiCS™ are trademarks, and RadiForce and EIZO are registered trademarks of Eizo Nanao Corporation.*

<sup>1</sup> Compatible with RadiCS™ and RadiNET™ Pro 2.5.0 or later versions.

<sup>2</sup> The product shall be free from defects in material and workmanship for a period of three (3) years, but subject to the usage time being 10,000 hours from the date of purchase.