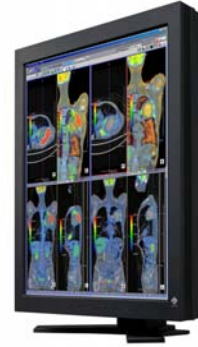




EIZO Announces RadiForce® RX211 LCD Monitor for Color and Monochrome Imaging at ECR 2008

Hakusan, Japan February 15, 2008 – Eizo Nanao Corporation (“EIZO”) today announced it will introduce the RadiForce RX211, a new 2 megapixel (1200 x 1600 native resolution) color LCD monitor at ECR 2008 (European Congress of Radiology). The RadiForce RX211 meets the increasing need of hospitals for a monitor that can display both grayscale and color images for diagnostic imaging. It comes backed by a five-year warranty.



Hospitals typically use color monitors for imaging modalities like CT, MRI, and endoscopy, and high brightness monochrome monitors for viewing high resolution images such as CR and DR. In the past, departments purchased monitors according to the type of images they displayed, but image sharing between departments coupled with advances in image processing technology like 3D rendering and fusion have created the need for high level multi-purpose monitors that can display both color and monochrome images.

With the RadiForce RX211, viewing color and monochrome images can be done on one monitor. The high brightness of 750 cd/m² and contrast ratio of 1100:1 are on a par with monochrome monitors, making the RX211 ideal for displaying both color and monochrome images compliant with the DICOM (Digital Imaging and Communications in Medicine) Part 14 standard.

The five-year warranty is the first for a RadiForce color monitor and is valid in every country where an EIZO subsidiary or distributor is located. This ensures stable and reliable performance needed for displaying medical images.

EIZO incorporates its latest application specific integrated circuit (ASIC) into the RadiForce RX211. This ASIC contains a Digital Uniformity Equalizer (DUE) function to compensate for luminance non-uniformity, something characteristic of all LCD panels. DUE corrects luminance uniformity errors for every grayscale tone to ensure even uniformity across the screen and from monitor to monitor. DUE also corrects chromaticity uniformity errors enabling this color monitor to display accurate monochrome images wherever on the screen. This ensures that the monitor can meet the uniformity requirements for standards such as AAPM, DIN, and EUREF.

The RadiForce RX211 comes with a CAL Switch function which has various calibration modes for different modalities such as CR, CT, and endoscopy. Switching between modes can be done by pressing a button on the front bezel or by using the bundled ScreenManager Pro for Medical software to assign a mode to a specific application so that when the application is opened it automatically displays images in the assigned mode.

Additional Features

- Image Rotation function for hardware-based switching between landscape and portrait mode.



- Compatible with EIZO's remote calibration device Clip-On Swing Sensor (sold separately).
- Compatible with EIZO's quality control software RadiCS™ and network QC management software RadiNET Pro™ (sold separately).
- Compliance with stringent medical, safety, and EMC emissions standards including TÜV/GM, the CE Medical Device Directive, and UL60601-1.
- ScreenManager Pro for Medical bundled utility software allows handling of OSD functions with the mouse or keyboard. (Upstream USB connection with PC required.)
- Backlight saver function reduces power consumption and extends the life of the monitor.
- Independent Image Setting (IIS) function allows for any area of an image to be adjusted and pre-set to various grayscale gradations and luminance levels so just one section of an image or one image among many can be highlighted.

Availability

Mass production of the RadiForce RX211 is scheduled for April. Availability varies by country so please contact the EIZO subsidiary or distributor in your country for details. Visitors to the EIZO booth at ECR (European Congress of Radiology) 2008 in Vienna, Austria can have a first look at the RadiForce RX211 in the EIZO booth located in the Expo B, Booth 204. ECR runs from March 7-10.

About EIZO

Eizo Nanao Corporation is a leading global manufacturer of high-end visual display products with a wide range of LCD monitors. The image quality, long-term reliability, and innovative features of EIZO monitors make them the product of choice in many financial trading rooms, hospitals, back offices, and design studios throughout the world. EIZO is based in Japan and represented in over fifty countries by a network of exclusive distributors.

For more information, please contact:

Eizo Nanao Corporation
153 Shimokashiwano
Hakusan, Ishikawa 924-8566
Japan
Phone: +81 76 277-6792
Fax: +81 76 277-6793
radiforce.com

RadiCS™ and RadiNET™ are trademarks, and RadiForce and EIZO are registered trademarks of Eizo Nanao Corporation.