

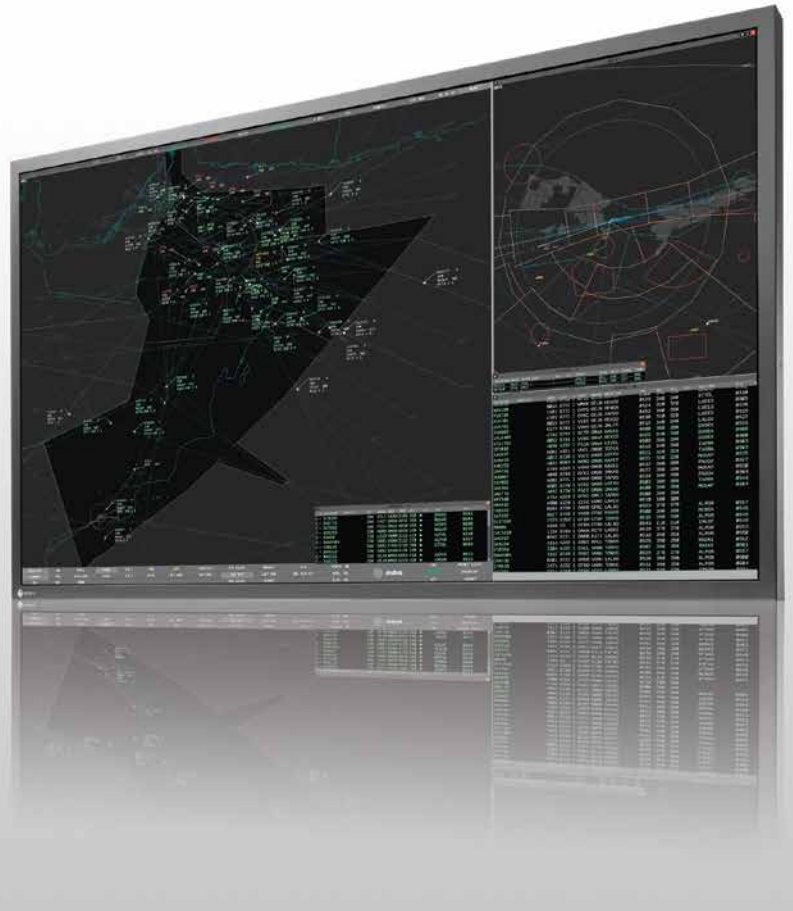


57.5" Primary Control Monitor

## Raptor® RP5824

*The Raptor RP5824 is a 57.5-inch 4K × 2K resolution primary control monitor developed specifically for air traffic control centers. Its large 8 megapixel screen allows controllers to view more data simultaneously in a single location for a streamlined workflow.*

- 3840 × 2160 native resolution
- Reliability with built-in redundancy
- Thin bezel design
- Long-lasting direct LED backlight



### Streamline Your Workstation

Display 4K × 2K resolution data in full on one screen without the obtrusive bezels typically found in multi-monitor workstations. In addition, 2K × 2K and auxiliary information can be displayed simultaneously on a single screen using EIZO's Large Monitor Manager\* for controlling video signals. This allows controllers to view more information easily in one place instead of across multiple monitors.

*\*Contact [atc@eizo.com](mailto:atc@eizo.com) for more information.*

### Mission-Critical Redundancy

Redundant power supplies and backlights give the monitor a high degree of operational reliability for creating a fail-safe environment.

### Brightness Stabilization

EIZO's fully automated stability function uses an internal backlight sensor to stabilize the brightness level throughout the life of the monitor, compensating for fluctuations caused by variations in ambient temperature and the passage of time.

### Long-Lasting Direct LED Backlights

The monitor is equipped with two independent direct LED backlights that are highly efficient compared to conventional CCFL backlights, saving energy even when running at high brightness levels. The direct backlights also offer superior brightness uniformity for smoother images across the entire screen compared to edge-type backlight solutions.

### Optimized Brightness Settings

The monitor comes with several preset brightness settings optimized for ATC environments. This allows the controller to conveniently select the most appropriate setting according to ambient lighting conditions and helps to reduce eye fatigue.

### High Contrast for Clear Images

The monitor's exceptional contrast ratio of 4000:1 displays ATC data with a high level of clarity making details more distinct.

## 57.5" Primary Control Monitor

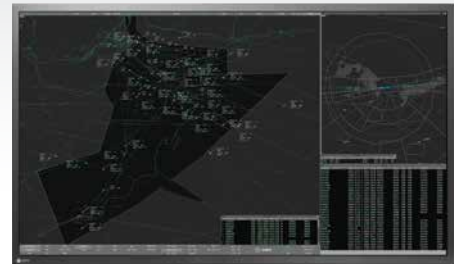
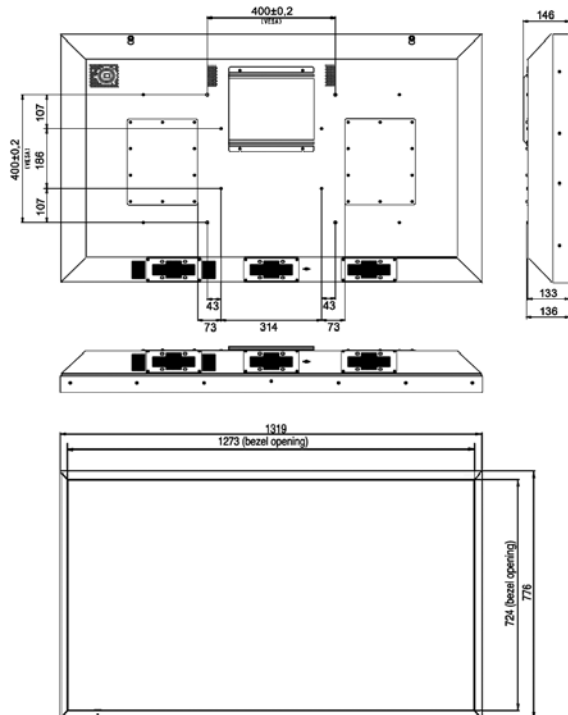
# Raptor® RP5824

### Wide Viewing Angles

The panel has 176° wide viewing angles, allowing the controller to see all data on the screen from any position without compromising image clarity. This also allows more than one person to view the screen more comfortably.

### Convenient Installation

The monitor supports VESA mounting for conveniently installing in open or closed ATC consoles.



### Specifications

|                                    |   |   |
|------------------------------------|---|---|
| Panel                              | Size                                      | 57.5"/ 146 cm                           |
|                                    | Native Resolution                         | 3840 × 2160 (16:9 aspect ratio)         |
|                                    | Viewable Image Size (H × V)               | 1270.1 × 721.4 mm                       |
|                                    | Pixel Pitch                               | 0.331 × 0.334                           |
|                                    | Display Colors                            | 16.77 million                           |
|                                    | Viewing Angles (H × V, typical)           | 176°, 176°                              |
|                                    | Brightness (typical)                      | 300 cd/m <sup>2</sup> (maximum)         |
|                                    | Contrast Ratio (typical)                  | 4000 :1                                 |
|                                    | Response Time (typical)                   | 9.5 ms (Gray to Gray)                   |
|                                    | Video Signals                             | Input Terminals                         |
| Digital Scanning Frequency (H / V) |   | 257 MHz (pixel), 59.7 - 60.5 Hz (Vsync) |
| Power                              | Power Requirements                        | AC 100 - 240 V                          |
|                                    | Maximum Power Consumption                 | 400 W                                   |
|                                    | Power Save Mode                           | 38 W                                    |
| Features and Functions             | Communication Interface                   | USB                                     |
| Physical Specifications            | Dimensions (W × H × D)                    | 1319 × 776 × 146 mm                     |
|                                    | Net Weight (W × H × D)                    | 47 kg                                   |
| Environmental Requirements         | Operating Temperature                     | 5 – 40 °C                               |
|                                    | Storage Temperature                       | -20 – 55 °C                             |
|                                    | Operating Humidity (R.H., non condensing) | Max. 80%                                |
| Certifications & Standards         | CE, UL, FCC, RoHS, WEEE, CCC              |   |
| Warranty                           | Two Years                                 |   |

## EIZO Technologies GmbH

Benzweg 3, 82538 Geretsried, Germany  
 Phone : +49-8171-3492-11 Fax : +49-8171-3492-16  
 atc@eizo.com  
 www.eizoglobal.com

EIZO, the EIZO logo, and Raptor are registered trademarks of EIZO Corporation in Japan and other countries. All other company names, product names, and logos are trademarks or registered trademarks of their respective companies. Screen images provided by Indra.  
 Specifications are subject to change without notice.