

# User's Manual

# RP-917

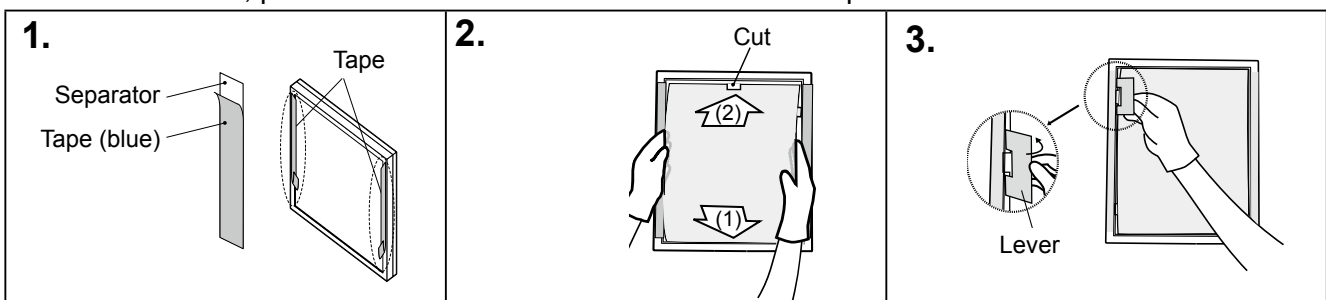
Panel Protector for EIZO 54.1 cm (21.3) inch class LCD Monitors

## Note

- Surface of the panel protector catches the dirt (dust or finger prints) easily. Please use the enclosed gloves while installing and removing the panel protector.
- Please use the supplied masking tape and be careful not to scratch the LCD panel or the cabinet with the panel protector during installation. Also please do not remove the panel protector often. It may scratch or result in damage to the LCD panel.
- When using LCD monitor with optional panel protector, it is preferable to avoid using downwards. In this condition, the panel protector might become bend or slip out from the monitor.
- If using the Integrated Front Sensor after installation of a panel protector, be sure to execute correlation using RadiCS/RadiCS LE. Refer to each User's Manual for details.

## Installation

Before installation, please remove dust and stains from the LCD panel.



- 1. Strip the tape from the separator and adhere it on each edge of the cabinet (on the right and left).**  
Adhere the tape on long sides of the cabinet.
- 2. Set the panel protector into the grooves of the panel frame; the lower first (1), then the upper (2).**  
The panel protector has a cut to fit on the sensor. Align the cut with the sensor position when installing the panel protector. If installed in the wrong orientation, the sensor may be damaged.
- 3. With the enclosed tool (Lever) set the tabs of the panel protector into the side grooves (4 tabs).**  
Put the lever on the tabs of the panel protector and move it toward the LCD panel to install. Position the protector into the LCD panel tightly without leaving an opening.
- 4. Strip the tape from the cabinet.**

## Removing

Put the lever on the tabs of panel protector and move it toward the cabinet to remove.

## Cleaning

This product comes with a special cleaning cloth designed to remove stains from the panel.

If necessary stubborn stains can be removed by moistening part of the cloth with water to enhance its cleaning power.

## Note

- Please be sure to keep the panel protector immobilized while cleaning it. Otherwise it may scratch the surface of the LCD panel. To hold the panel protector by hand, use gloves or a soft cloth to avoid dust or finger prints.
- Chemicals such as alcohol and antiseptic solution may cause gloss variation, tarnishing, and fading of the cabinet or panel, and also quality deterioration of the image.
- Never use any solvents or chemicals, such as thinner, benzene, wax, and abrasive cleaner, which may damage the cabinet or panel.

## Tips

- The optional ScreenCleaner is recommended for cleaning the cabinet and panel surface.

## Specification

Surface treatment	Anti-Reflective Coating (Both sides)	Coating strength	4 H
Reflectivity	Less than 1 %	Light transmission	More than 95.0 %
Dimension/ Weight	341.5 mm (W) × 425.7 mm (H) × 1.2 mm (D) / Approx. 210 g		
Accessories	Lever (for Panel Protector), Gloves, Cleaning Cloth, User's Manual, Masking tape 4 pieces (2 sets)		



## **EIZO Corporation**

153 Shimokashiwano, Hakusan, Ishikawa 924-8566 Japan  
Phone: +81 76 277 6792 Fax: +81 76 277 6793

## **EIZO Europe GmbH**

Helmut-Grashoff-Strasse 18, 41179 Mönchengladbach, Germany  
Phone: +49 2161 8210210 Fax: +49 2161 8210150

## **EIZO 株式会社**

〒 924-8566 石川県白山市下柏野町 153 番地

<http://www.eizoglobal.com>  
<http://www.eizo.co.jp>

Copyright © 2016 EIZO Corporation. All rights reserved.

1st Edition-September, 2016 Printed in Japan.

00N0L965A1  
(UM-RP-917-AL)