

Installation Guide

TouchPanel Driver GenTouch Software

Important

Please read this Installation Guide carefully to familiarize yourself with safe and effective usage.

The latest software and Installation Guide are available for download from our site:
<http://www.eizo.com>

Introducing GenTouch Software	2
1. Setting Up	3
1-1. System Requirements.....	3
1-2. Installing GenTouch Software	3
1-3. Calibration	7
1-4. Uninstalling GenTouch Software	9
2. Basic Operations of GenPanel	10
2-1. Settings Tab.....	10
2-2. Sound Tab	13
2-3. Diagnostics Tab	13
2-4. About Tab	13
3. Cautions for the Use of the Touch Panel	14
4. Troubleshooting.....	15



Introducing GenTouch Software

GenTouch Software is a driver software necessary to use NANA O Surface Acoustic Wave touch panel monitor with Windows 7/Vista/XP.

Copyright © 2009-2011 EIZO NANA O CORPORATION All rights reserved.

No part of this manual may be reproduced, stored in a retrieval system, or transmitted, in any form or by any means, electric, mechanical, or otherwise, without the prior written permission of EIZO NANA O CORPORATION.

EIZO NANA O CORPORATION is under no obligation to hold any submitted material or information confidential unless prior arrangements are made pursuant to EIZO NANA O CORPORATION's receipt of said information. Although every effort has been made to ensure that this manual provides up-to-date information, please note that this products specifications are subject to change without notice.

Windows, Windows Vista are registered trademarks of Microsoft Corporation.

GeneralTouch is a trademark of GeneralTouch Technology Co., Ltd.

EIZO and EIZO Logo are registered trademarks of EIZO NANA O CORPORATION in Japan and other countries.

The screen shots used in this manual are taken from GeneralTouch Technology Co., Ltd. products.

1. Setting Up

1-1. System Requirements

GenTouch Software operates under the system shown below.

OS	Windows 7 (32 bit and 64 bit) Windows Vista Service Pack 2 (32 bit) Windows XP Service Pack 3 (32 bit)
Monitor	EIZO FlexScan touch panel monitor using Surface Acoustic Wave technology

Note

- If you connect multiple monitors to a PC, the number of touch panel monitor must be one (more than one touch panel monitor that is connected to a PC cannot work).

1-2. Installing GenTouch Software

- 1 Connect the USB cable to the PC USB Downstream port and to the monitor USB Upstream port**

Note

- Make sure to connect the USB cable before installing the driver. If you connect the USB cable after installing the driver, the monitor will not be recognized.

- 2 Connect the power cord to the power connector and the power outlet**

- 3 Turn on the monitor**

- 4 Turn on the PC, and log on to the user account that has the “Administrators” privilege**

For user account privilege settings, contact your system administrator.

- 5 Prepare for installation**

To install the software from the EIZO LCD Utility Disk (CD-ROM)

After inserting the “EIZO LCD Utility Disk” CD-ROM into the CD-ROM drive the menu will open automatically.

Tips

- If the menu does not open automatically, double-click “Launcher.exe” from the drive into which the “EIZO LCD Utility Disk” CD-ROM has been inserted. The menu starts up.

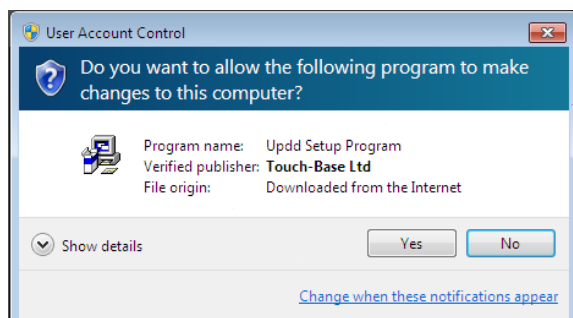
1. Click “Touch Panel Driver” in the “Drivers” tab.
2. Click the [Install] button to start the setup wizard.

To download and install the software from our website

1. Unzip the downloaded file.
2. Double-click “setup.exe” in the “GenTouch” - “English” folder to start the setup wizard.

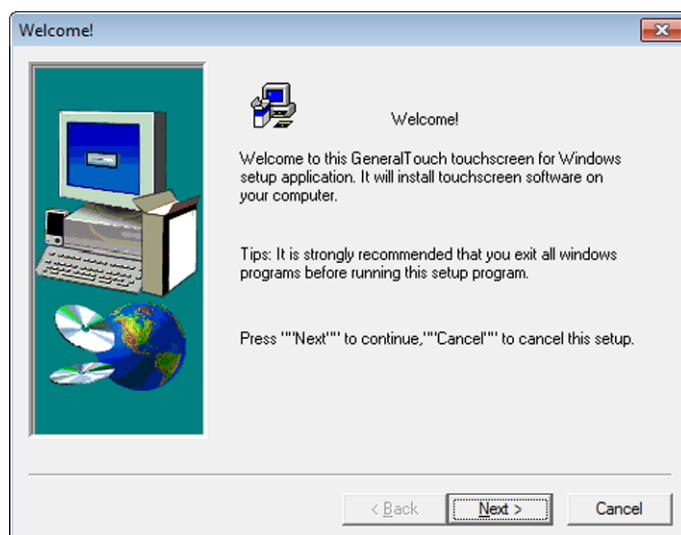
Tips

- The “User Account Control” dialog may appear.
Click [Yes]/[Continue] to open the setup wizard.



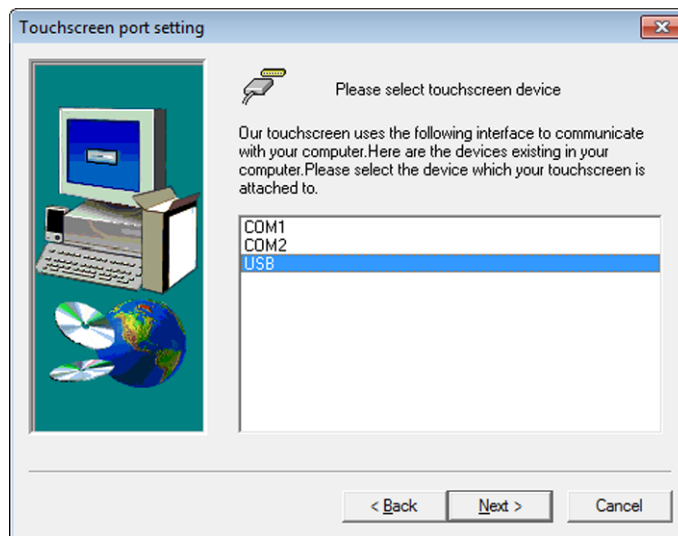
6 Start the setup wizard

Click [Next >].



7 Select the target device for connection

Select “USB” as a target device for connection and then click [Next >] to start the installation.

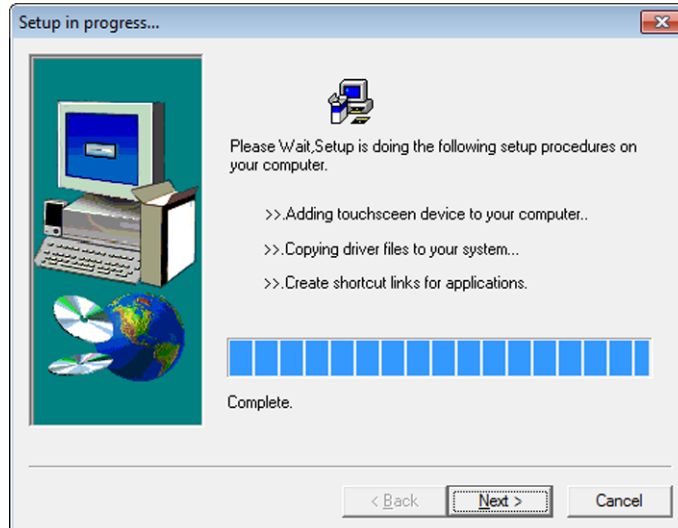


Note

- Please make sure to select “USB”. This monitor does not support the serial interface.

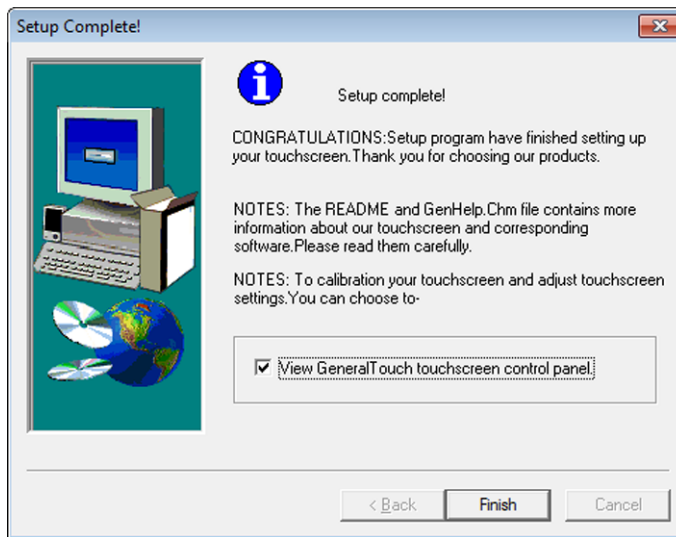
8 The installation progress window opens

When the [Next >] button becomes enabled, click [Next >].



9 Finish the installation

Click [Finish].



Tips

- When the “View GeneralTouch touchscreen control panel.” is checked, the GenTouch control panel opens when you click [Finish].
-

1-3. Calibration

After completing the installation of driver, please make sure to perform the following procedure to calibrate the screen.

Note

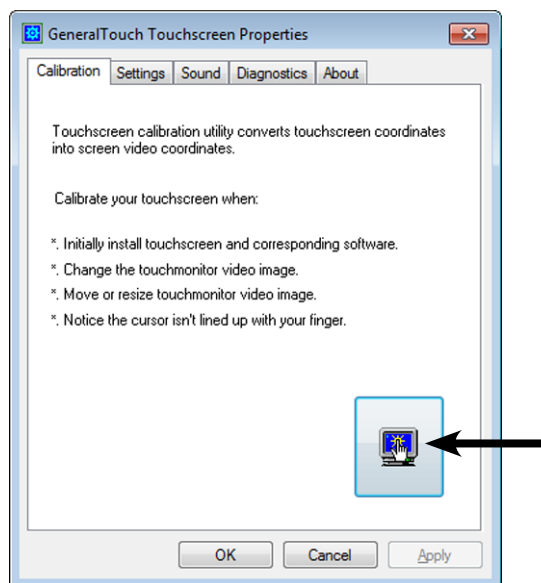
- Start the calibration within 30 seconds after the calibration window opens. Otherwise, the calibration is canceled.

1 Click [Start]-[All Programs]-[GenTouchScreen]-[GenPanel]

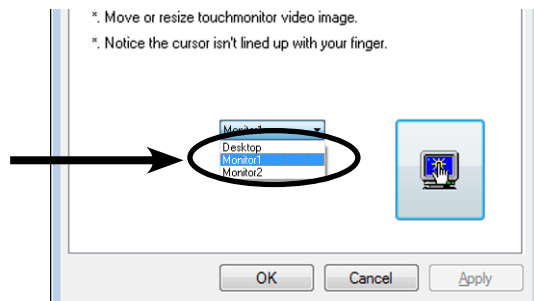
“GeneralTouch Touchscreen Properties” window opens.

2 Click the button in the lower right corner of the “Calibration” tab

The calibration window opens.

**Note**

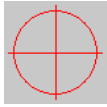
- If you work in a multiple monitor environment, select the monitor to calibrate from the pull-down list in the “Calibration” tab.



Do not select “Desktop”. The calibration cannot be performed correctly.

3 Touch the calibration target with a finger, then release

The calibration target appears on the screen in three locations, the top left, bottom right and top right, in this order.

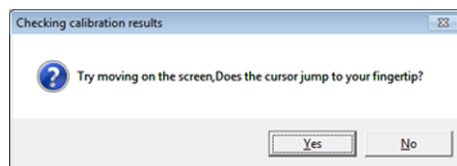


Tips

- If you press the [ESC] key when the calibration window is displayed, the calibration will be interrupted.

After the calibration is completed, the “Checking calibration results” window opens.

4 Click [Yes]



Tips

- To perform the calibration again, click [No].
-

1-4. Uninstalling GenTouch Software

Note

- Before uninstalling GenTouch Software, be sure to exit all touch panel setting windows such as the calibration window and the GenTouch Control Panel.
-

1 Log on to the user account that has the “Administrators” privilege

2 Click [Start]-[All Programs]-[GenTouchScreen]-[Uninstall]

The setup wizard opens.

Tips

- If you are installing in a Windows Vista environment, the “User Account Control” dialog may appear.
Click [Yes]/[Continue] to open the uninstallation wizard.
-

3 Start the setup wizard

Click [Next >].

4 The uninstallation progress window opens

When the [Next >] button becomes enabled, click [Next >].

5 Finish the uninstallation

Click [Finish].

6 Restart the PC

Click [Restart Now]/[Yes] to restart the PC.

2. Basic Operations of GenPanel

Click [Start]-[All Programs]-[GenTouchScreen]-[GenPanel] to open the GenPanel.

Tips

- GenPanel can also be opened from [GeneralTouchTouchScreen] that appears by clicking [Start]-[Control Panel].

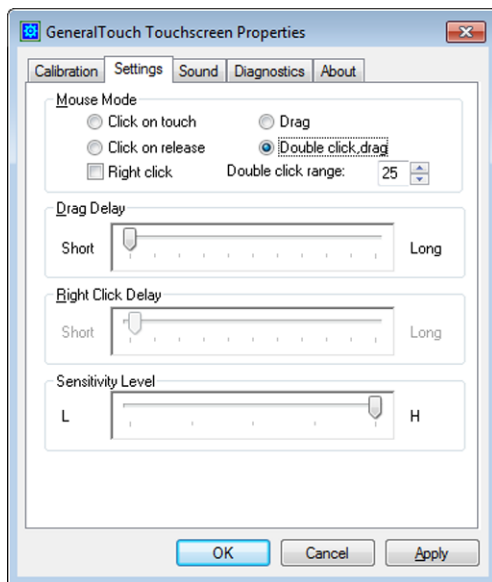
This section describes about the items that can be set in each tab of the GenPanel.

2-1. Settings Tab

Enables to change the settings of the screen response to your touch operation.

Tips

- The settings become available after clicking [OK] or [Apply].



Changing Mouse Mode [Mouse Mode]

Mouse Mode include four modes. Change the mode as needed.

Mode Name	Touch Control and Application
Click on touch	Suitable for applications such as a calculator, which is button-based operation. - Click: The action is recognized by touching the screen. - Double-click: Touch the same spot twice on the screen with a finger. *Drawing and dragging are not supported.
Click on release	Suitable for applications that require very precise clicking. - Click: The action is recognized by lifting a finger off the screen. - Double-click: Touch the same spot twice on the screen with a finger. *Drawing and dragging are not supported.
Drag	Suitable for drawing applications. - Click: The action is recognized by touching the screen. - Double-click: Touch the same spot twice on the screen with a finger. - Drag: Touch and slide on the screen with a finger.
Double click, drag	Suitable for all applications. - Click: The action is recognized by touching the screen. - Double-click: Touch the same spot twice on the screen with a finger. - Drag: Touch and slide on the screen with a finger.

Using Right-click Operations

There are two methods for the right-click operations (see “Using GenPanel” or “Using RightButtonTool”). Use them separately as follows.

- GenPanel: Use this to prioritize the right-click operation.
- RightButtonTool: Use this to prioritize the operations of the modes such as dragging.

Note

- Do not use them at the same time. The right-click operation may not be detected.
-

Using GenPanel

Touching the monitor for the specified duration is recognized as a right-click.

Enabling the Right-clicking Operations

Check [Right click].

Setting the Time until a Right-click Operation is Recognized

Move the slide bar for [Right Click Delay] left or right.

The time recognized as a right-click operation is longer when moved to the right and shorter when moved to the left.

Note

- Set the mouse mode to “Click on release”.
-

Using RightButtonTool

As the RightButtonTool icon displayed on the desktop is clicked, it is detected as a right-click.

Displaying the RightButtonTool icon

Click [Start]-[All Programs]-[GenTouchScreen]-[RightButtonTool].

The following icon will appear on the top right of the desktop.



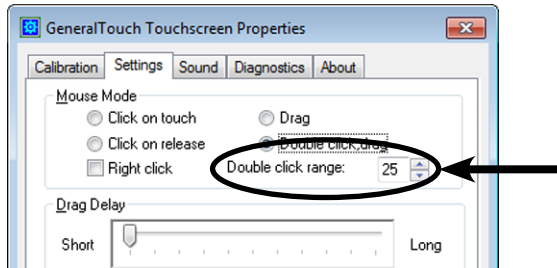
Note

- Set the mouse mode to “Click on touch”.
-

Setting the Double-click Operation Range [Double click range]

Sets the area range in which the double-click operation is recognized.

Click ▲/▼ for “Double click range” to adjust the range in pixel units. The default setting is 25 × 25 pixels.



Note

- The double-click speed cannot be changed. Even if you change the double-click speed on your PC, the speed will reset when you click [Apply] on the GenTouch control panel.
-

Setting the Speed of Drag [Drag Delay]

Enables to adjust the response time for a drag operation.

Move the slide bar for [Drag Delay] left or right.

The response time for a drag operation is longer when moved to the right and shorter when moved to the left.

Setting the Sensitivity Level [Sensitivity Level]

Enables to adjust the touch sensitivity.

Move the slide bar for [Sensitivity Level] left or right.

The touch sensitivity is higher when moved to the right. The higher the sensitivity level, the less power is required for a click to be detected.

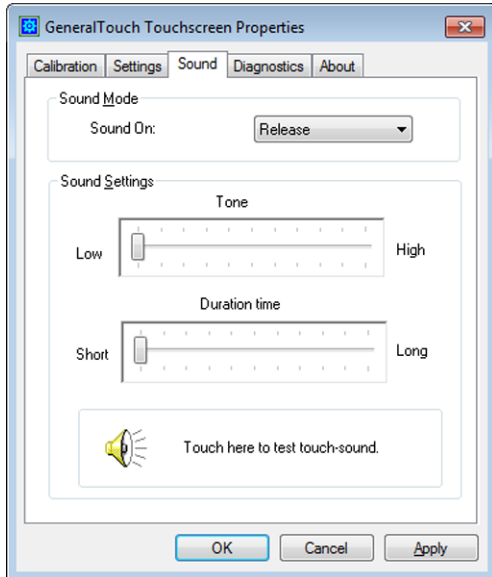
2-2. Sound Tab

Enables to set the touch-sound that occurs in response to the touch.

The touch-sound setting can be checked by touching the “Touch here to test touch -sound”.

Note

- Under Windows 7, touch-sound is only output through the audio output terminal of the PC. To hear touch-sound, connect speakers.



Setting Touch-Sound [Sound Mode]

Enables setting of the following three kinds of touch-sound.

Sound On:	Setting Detail
Disabled	No touch-sound occurs during touch operation.
Touch	The touch-sound occurs when touching the screen.
Release	The touch-sound occurs when lifting a finger off the screen.

Setting Sound Frequency for Touch-Tone [Tone]

Enables setting of the sound frequency for touch-tone.

Move the slide bar for [Tone] left or right.

The sound frequency for touch-tone is higher when moved to the right and lower when moved to the left.

Setting Touch-Sound Duration [Duration time]

Enables setting of the touch-sound duration.

Move the slide bar for [Duration time] left or right.

The touch-sound duration is longer when moved to the right and shorter when moved to the left.

2-3. Diagnostics Tab

Enables to confirm the product information about the touch panel controller.

2-4. About Tab

Shows the version information for the GenTouch Software.

3. Cautions for the Use of the Touch Panel

While starting the PC and monitor

- Do not touch the touch panel.
It may cause the incorrect cursor position or disable the touch operation.
If this occurs, restart the monitor to restore the correct operation.

During touch operation

- Do not touch the screen with any hard or sharp-pointed objects. Touching with a pen point, fingernail, or the like will not be recognized.

During power-saving mode

- When the PC is in system standby status, the PC may not be resumed from the standby status by touching the screen depending on the PC's hardware configuration. In this case, operate the mouse or the keyboard.

4. Troubleshooting

If a problem still remains after applying the suggested remedies, contact your local dealer.

Problems	Possible cause and remedy
1. Right click does not work.	<ul style="list-style-type: none">• Check that an appropriate mouse mode is set for the right-click operation method ("Using Right-click Operations" (page 11)).
2. No touch-sound.	<ul style="list-style-type: none">• The touch-sound may not be output from the external line out of the PC depending on the hardware configuration.• Under Windows 7, touch-sound is only output through the audio output terminal of the PC. To hear touch-sound, connect speakers.
3. (When using in multiple monitor situation) When the monitor mode (single, dual, or clone) is changed, the cursor does not appear on the touched position.	<ul style="list-style-type: none">• After the monitor is changed, it is necessary to calibrate the screen again.



EIZO NANO CORPORATION

<http://www.eizo.com>

3rd Edition-May, 2011
03V23003C1
(U.M-GENTOUCH)