

Installation Guide

Touch Panel Driver (NextWindow) Touch Screen Calibration Utility

Important

Please read this Installation Guide carefully to familiarize yourself with safe and effective usage.

The latest software and Installation Guide are available for download from our site:

<http://www.eizo.com>

Introduction	2
1. Setting Up.....	3
1 - 1. System Requirements	3
1 - 2. Installing Software	4
1 - 3. Setting Up Multiple Monitor Configuration	7
1 - 4. Uninstalling Software	8
2. Basic Operations of Calibration Utility ...	10
2 - 1. Calibration	10
2 - 2. Return To Default Setting.....	11
3. Cautions for the Use of the Touch Panel	12
4. Troubleshooting	14



Introduction

About the Software

This software includes the touch panel driver and the calibration utility necessary to use the EIZO Infrared Optics Imaging touch panel monitor (FlexScan T1751) with Windows 7/Vista.

Note

- When used on the Windows 7 OS, the multi-touch function detecting two touch points is supported.
-

Copyright © 2010 EIZO NANA CORPORATION All rights reserved.

No part of this manual may be reproduced, stored in a retrieval system, or transmitted, in any form or by any means, electric, mechanical, or otherwise, without the prior written permission of EIZO NANA CORPORATION.

EIZO NANA CORPORATION is under no obligation to hold any submitted material or information confidential unless prior arrangements are made pursuant to EIZO NANA CORPORATION's receipt of said information. Although every effort has been made to ensure that this manual provides up-to-date information, please note that this products specifications are subject to change without notice.

Windows, Windows Vista are registered trademarks of Microsoft Corporation in the United States and other countries.

NextWindow is a trademark of NextWindow Ltd.

EIZO and EIZO Logo are registered trademarks of EIZO NANA CORPORATION in Japan and other countries.

All other trademarks are the properties of their respective owners.

The screen shots used in this manual are taken from NextWinow products.

1. Setting Up

1 - 1. System Requirements

Touch Panel Driver

The NextWindow touch panel driver operates under the system shown below.

OS	<ul style="list-style-type: none">• Windows 7 (32 bit / 64 bit)• Windows Vista Service Pack 2 (32 bit / 64 bit)
Monitor	EIZO FlexScan T1751

Note

- When used on Windows 7, the following condition(s) is/are required:
 - When used under the multiple monitor configuration, there should only be one touch panel monitor among the connected monitors.
 - *The OS setup is separately required. See “[1 - 3. Setting Up Multiple Monitor Configuration](#)” (page 7) for the setup.
- When used on Windows Vista, the following conditions are required:
 - The driver should be used under the single monitor configuration. (The multiple monitor configuration is not supported.)

Calibration Utility

The Touch Screen Calibration Utility operates under the system shown below.

OS	Windows 7 (32 bit / 64 bit)
Monitor	EIZO FlexScan T1751

1 - 2. Installing Software

Note

- When reinstalling the touch panel driver and/or the calibration utility, restart the PC after uninstalling the software and then install it again.
-

Touch Panel Driver

1. Connect the USB cable

Using the USB cable, connect the PC's USB downstream port and the monitor's USB upstream port.

Note

- Make sure to connect the USB cable before installing the driver. If you connect the USB cable after installing the driver, the monitor will not be recognized.
-

2. Connect the power cord to the power connector and the power outlet

3. Turn on the monitor

4. Turn on the PC, and log on to the user account that has the “Administrators” privilege

For user account privilege settings, contact your system administrator.

5. Prepare for installation

To install the software from the “EIZO LCD Utility Disk” CD-ROM

After inserting the “EIZO LCD Utility Disk” CD-ROM into the CD-ROM drive, the startup menu will open automatically.

Tips

- When the startup menu does not appear automatically, double-click “Launcher.exe”.
-

1. Click [Touch Panel Driver] in the “Touch Panel” tab.

2. Install the touch panel driver.

Click [Install] to open the setup wizard.

To download and install the software from our web site

1. Extract the downloaded file.

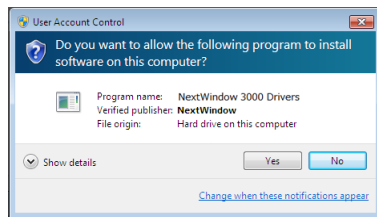
2. Install the touch panel driver.

Double-click “NextWindow_3000_Driver_x_Generic.exe” in the “Driver” folder to open the setup wizard.

(The “x” in the file name represents the version number.)

Tips

- The “User Account Control” dialog box may appear.
Click [Yes]/[Allow] to open the setup wizard.

**6. The installation progress window opens****7. Finish the installation****8. Restart the PC**

Calibration Utility (Only Applied When Used on Windows 7)

1. Log on to the user account that has the “Administrators” privilege

For user account privilege settings, contact your system administrator.

2. Prepare for installation

To install the software from the “EIZO LCD Utility Disk” CD-ROM

After inserting the “EIZO LCD Utility Disk” CD-ROM into the CD-ROM drive, the startup menu will open automatically.

Tips

- When the startup menu does not appear automatically, double-click “Launcher.exe”.
-

1. Click [Calibration Utility] in the “Touch Panel” tab.
2. Install the calibration utility.

Click [Install] to open the setup wizard.

To download and install the software from our web site

1. Extract the downloaded file.
2. Install the calibration utility.
Double-click “TSCU_x.exe” in the “Utility” folder to open the setup wizard.
(The “x” in the file name represents the version number.)

Tips

- The “User Account Control” dialog box may appear.
Click [Yes]/[Allow] to open the setup wizard.
-

3. The installation progress window opens

4. Finish the installation

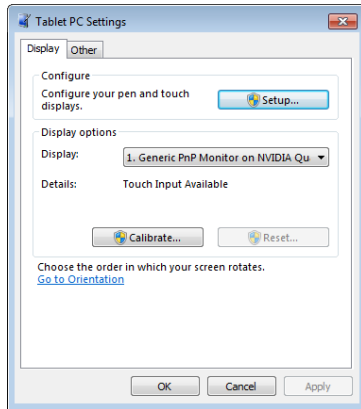
1 - 3. Setting Up Multiple Monitor Configuration

Note

- Perform this procedure when the monitor is used under the multiple monitor configuration on Windows 7. Windows Vista does not support the multiple monitor configuration.
-

1. Click [Start]-[Control Panel]-[Hardware and Sound]-[Tablet PC Settings]

“Tablet PC Settings” window opens.



2. Click [Setup...] in the “Display” tab

Tips

- The “User Account Control” dialog box may appear. Click [Yes]/[Allow] to open the setup wizard.
-

3. Perform setup of the configuration following the message indicated on the screen

1 - 4. Uninstalling Software

Note

- Before performing uninstallation, be sure to exit all touch panel setting windows such as the calibration window.
-

Touch Panel Driver

- 1. Log on to the user account that has the “Administrators” privilege**
 - 2. Click [Start]-[Control Panel]-[Programs]-[Uninstall a program]**
 - 3. Double-click “NextWindow 3000 Drivers”**
-

Tips

- The “User Account Control” dialog box may appear.
Click [Yes]/[Allow] to open the uninstallation wizard.
-

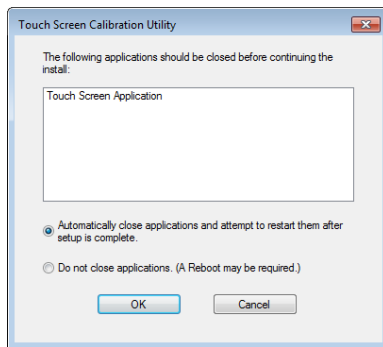
- 4. The uninstallation progress window opens**
 - 5. Finish the uninstallation**
 - 6. Restart the PC**
-

Tips

- If the touch panel driver is not correctly uninstalled, use the device manager to uninstall the driver.
-

Calibration Utility

1. Log on to the user account that has the “Administrators” privilege
2. Click [Start]-[Control Panel]-[Programs]-[Uninstall a program]
3. Double-click “Touch Screen Calibration Utility”
4. When the following window opens, click [OK]



Tips

- The “User Account Control” dialog box may appear. Click [Yes]/[Allow] to open the uninstallation wizard.
-

5. The uninstallation progress window opens
6. Finish the uninstallation
7. Restart the PC

Note

- If the calibration utility alone is uninstalled while the touch panel driver remains installed, touch panel operation will not work until the computer is restarted.
-

2. Basic Operations of Calibration Utility

2 - 1. Calibration

Note

- Perform calibration if the touched point is not aligned with the cursor position.

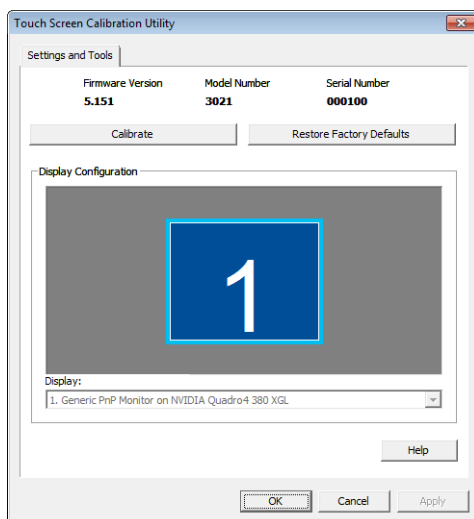
1. Click [Start]-[All programs]-[Touch Screen Calibration Utility]-[Touch Screen Calibration Utility]

The “Touch Screen Calibration Utility” icon appears in the notification area.



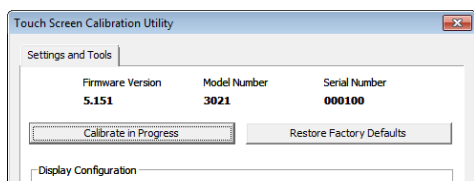
2. Double-click “Touch Screen Calibration Utility”

The calibration utility starts up.



3. Click [Calibrate]

[Calibrate] changes to [Calibrate in Progress].



The cursor moves to the top left of the screen.

Note

- If the screen is not touched within 20 seconds after the button changes from [Calibrate] to [Calibrate in Progress], calibration will be cancelled.

Tips

- If you press the [ESC] key when the calibration window is displayed, the calibration will be interrupted.

4. Touch the cursor

The cursor moves among the four locations, the top left, top right, bottom right and bottom left, in this order.

Note

- Keep touching the cursor until it moves.

5. The cursor moves to the screen center

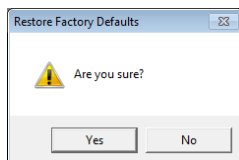
Check if the button is changed from [Calibration in Progress] to [Calibration]

6. Click [OK] to exit the utility**2 - 2. Return To Default Setting****1. Click [Start]-[All programs]-[Touch Screen Calibration Utility]-[Touch Screen Calibration Utility]**

The “Touch Screen Calibration Utility” icon appears in the notification area.

2. Double-click “Touch Screen Calibration Utility”

The calibration utility starts up.

3. Click [Restore Factory Defaults]**4. Click [Yes] on the confirmation window****5. Click [OK] to exit the utility**

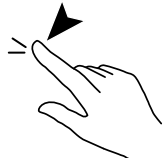
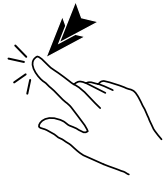
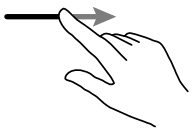
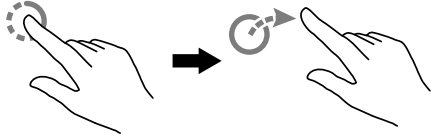
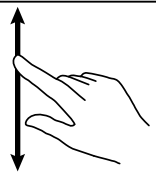
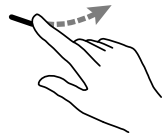
3. Cautions for the Use of the Touch Panel

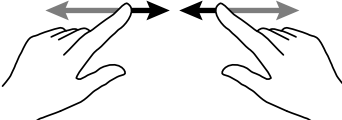
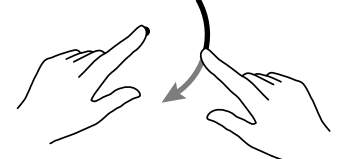
● Powersaving function for the PC

- When the PC is in system standby status, the PC cannot be resumed by touching the touch panel. Operate the mouse or the keyboard to resume the PC from system standby.

● Touch Operations

- It may take some time until touch operation is enabled after the monitor power is turned on.
- Touch the panel with your finger, the supplied touch pen, or a non-reflective object that has no risk of damaging the panel surface. If any of the following is used, the touch panel does not work correctly.
 - Object whose surface changes in shape when touching the panel, such as a glove
 - Mirror-like reflective object
 - Transparent object
- The types of touches available depend on the type of OS being used.
Windows 7 supports multi-touch function detecting two touch points.

Operation \ OS	OS	
	Windows 7	Windows Vista
• Click (Tap)	Touch and release the screen once with your finger.	
• Double-click (Double-tap)	Touch and release the screen twice in quick succession with your finger.	
• Drag	Touch the screen and move your finger without releasing the screen.	
• Right-click	1. Touch and keep touching the screen without moving your finger on it. A circle is drawn around the touch position. 2. When the circle is complete, release your finger.	
• Scroll	Touch a scrollable screen and slide your finger vertically without releasing the screen.	
• Flick	Touch the screen and flick your finger on the screen.	

OS Operation	Windows 7	Windows Vista
• Zoom (in/out)	<p data-bbox="536 259 991 349">Touch a zoomable image with two fingers, and move the fingers away from or closer to each other without releasing the screen.</p> 	-
• Rotation	<p data-bbox="536 495 991 618">Touch a rotatable image with two fingers. Then, without releasing the screen, fix one finger as the supporting point, and arc the other.</p> 	-

- Perform setting on the OS for touch operation.

4. Troubleshooting

If a problem still remains after applying the suggested remedies, contact your local dealer.

Problems	Possible cause and remedy
1. Touch operation is disabled.	<ul style="list-style-type: none"> • Check that the monitor and PC are connected with a USB cable. • Turn off/on the monitor's power. • Reboot the PC.
2. No sound is heard when the panel is touched.	<ul style="list-style-type: none"> • This product does not support to output sound when the screen is touched.
3. The cursor is not positioned correctly.	<ul style="list-style-type: none"> • Use the calibration utility to perform the calibration. “2 - 1. Calibration” (page 10)
4. The cursor moves irregularly or flips.	<ul style="list-style-type: none"> • If the surface or a side of the panel is dirty, clean it. • Check the setting environment of the monitor. This function does not work correctly under the following conditions. <ul style="list-style-type: none"> - The panel surface is subject to direct or indirect sunlight or strong light. - There is some infrared device near the monitor. - Monitors are adjacent to each other. • A touch insensitive point on the panel may be touched. • If an arm (or other stand) is attached, use the monitor in landscape view mode. If the monitor is used in portrait view mode, the monitor does not work correctly. (This product does not support portrait view mode when an arm (or other stand) is attached.) • This product supports up to two simultaneous touches (multi-touch support). Since the two sensors at both top corners of the screen are used to detect touches, the monitor may not be able to detect two simultaneous touches precisely depending on their positions.
5. (When using in multiple monitor configuration) When the monitor mode (single, dual, or clone) is changed, the cursor does not appear on the touched position.	<ul style="list-style-type: none"> • After the monitor is changed, it is necessary to perform setting of the multiple monitor configuration again. (“1 - 3. Setting Up Multiple Monitor Configuration” (page 7))



EIZO NANO CORPORATION

<http://www.eizo.com>

1st Edition-October, 2010

03V23411A1
(U.M-NW)